



National Maritime Museum

ANNUAL REVIEW 2009-10



*Images (cover): the 'Tarbat Ness' lighthouse optic, Neptune Court;
(inside fold): the Stanhope entrance at night;
(opposite left): visitors viewing objects in 'Time and the Navy',
Royal Observatory; (above): 'Sunbeam' figurehead in
the Neptune Court foyer; (opposite left): the glass roof of Neptune Court,
from 'Your Ocean' gallery.*

Contents

- 4** Chairman's foreword
- 5** Director's introduction
- 7** Activities, achievements and performance
- 8** Exhibitions
- 10** Royal Observatory, Greenwich
- 11** International Year of Astronomy
- 12** Learning
- 15** Awards
- 16** Expertise
- 18** Collections
- 20** Membership and Development
- 21** Supporters
- 22** People
- 23** Sammy Ofer Wing
- 24** Finance
- 27** Trustees and Executive

Chairman's foreword by Lord Sterling of Plaistow



On 5 January,
HM The Queen granted
Royal Borough status to
the London Borough
of Greenwich.

The year covered by this report has been truly notable for Greenwich and the National Maritime Museum. As we build up to 2012 and the 75th anniversary of the opening of the Museum, it is very pleasing to be able to report so positively on several significant matters.

On 5 January 2010, HM The Queen granted Royal Borough status to the London Borough of Greenwich. This is in recognition of the close links forged between Greenwich and royalty, from the Middle Ages to the present day. It also recognizes the Borough's global significance as the home of the Prime Meridian, Greenwich Mean Time and a UNESCO World Heritage Site.

Royal status will formally be conferred in the year of the Queen's Diamond Jubilee, which also falls in 2012, when our major exhibition telling the story of the Thames through the ages opens as the first large-scale show in the Museum's new Sammy Ofer Wing.

There was further positive news on 4 February, with the announcement that all the funding needed to complete the conservation of the *Cutty Sark* had been secured. Reopening is planned for late 2011 and the Museum looks forward to welcoming this good friend's reappearance in its greatly improved berth.

The next two years are set to be very eventful. As those reading this review will probably be aware, the London 2012 Olympic Games are coming to Greenwich. As the only cultural institution directly involved as an Olympic venue, the Museum is working closely with the London Organizing Committee (LOCOG) to ensure that we play our role fully in delivering a successful Games, with their important cultural component and legacy. We aim to match public expectations with revitalized maritime galleries at the Museum, which will be open to all our UK and overseas visitors throughout the period of the Games.

In the meantime, construction work on the new Sammy Ofer Wing continues apace, and we were pleased to welcome Sammy Ofer and members of his family on 8 September 2009, when the cornerstone symbolizing the start of a new era for the Museum was unveiled.

The year closed with the expected news of a cut in our Grant-in-Aid for 2010-11. Moving forward in economic circumstances that are likely to become even more challenging in the immediate future will require us to find ways of re-balancing the value of our work with the support we receive from the taxpayer. Despite these difficult times, our performance this year has again been exemplary.

The Trustees and I wish to thank staff, management, volunteers, sponsors and stakeholders - all those involved with this great Museum.

Lord Sterling, Chairman of the Board of Trustees

Images (above): Lord Sterling of Plaistow;
(opposite): Dr Kevin Fewster.

Director's introduction by Kevin Fewster

I am delighted to report that 2009–10 was an excellent year for our visitor attendance. Total visits to the Museum's three sites reached 2.4 million, a record high and 15% above last year's all-time record, itself an increase of 17%. In fact, new records were achieved at all three sites.

Helped by the increase in site visits, our retail sales for 2009–10 were the highest ever achieved, at £1.64 million. The Museum's Grant-in-Aid support was reduced to £6.67 per visit, compared to £7.45 in 2008–09, a significant improvement for the fourth year running.

We were also very pleased to achieve a 37% rise in attendances and a 56% increase in revenue on the previous year at the at the Peter Harrison Planetarium. We had worked to integrate planetarium programming with current exhibitions and this paid dividends. The planetarium show *Ice Worlds* took audiences on a journey to Arctic regions and the Earth's frozen extraterrestrial neighbours, and this was tied in with the Museum's exhibition *The North-West Passage: an Arctic Obsession*.

It is particularly gratifying when our achievements are recognized by others and I am very pleased that the Museum was named Visitor Attraction of the Year at the Visit London tourism awards in 2009. The programme of events marking International Year of Astronomy at the Royal Observatory, Greenwich, was also named Best Tourism Experience, and one of our gallery assistants, Nick Babbs, won the bronze award for Outstanding Customer Service.

There were two further awards over the year – our Solar Stormwatch website (www.stormwatch.com) was named Best Innovative Site at the international 'Museums and the Web' conference in Denver, while the book *Alan Villiers: Voyager of the Winds* by Kate Lance, published by NMM, won the Mountbatten Maritime Award at the 2009 Maritime Foundation Maritime Media Awards.

We were also in the happy position of giving awards ourselves, in the inaugural *Astronomy Photographer of the Year* competition. This dynamic project was organized in collaboration with *Sky at Night* magazine. Part of the very successful International Year of Astronomy, the competition proved to be a great way for the Royal Observatory to reach a new audience. There was more excellent news in the award of £250,000 (over three years) by Lloyd's Register Educational Trust to develop our Excellence in Science Initiative at the Observatory. We are very grateful for this generous grant.

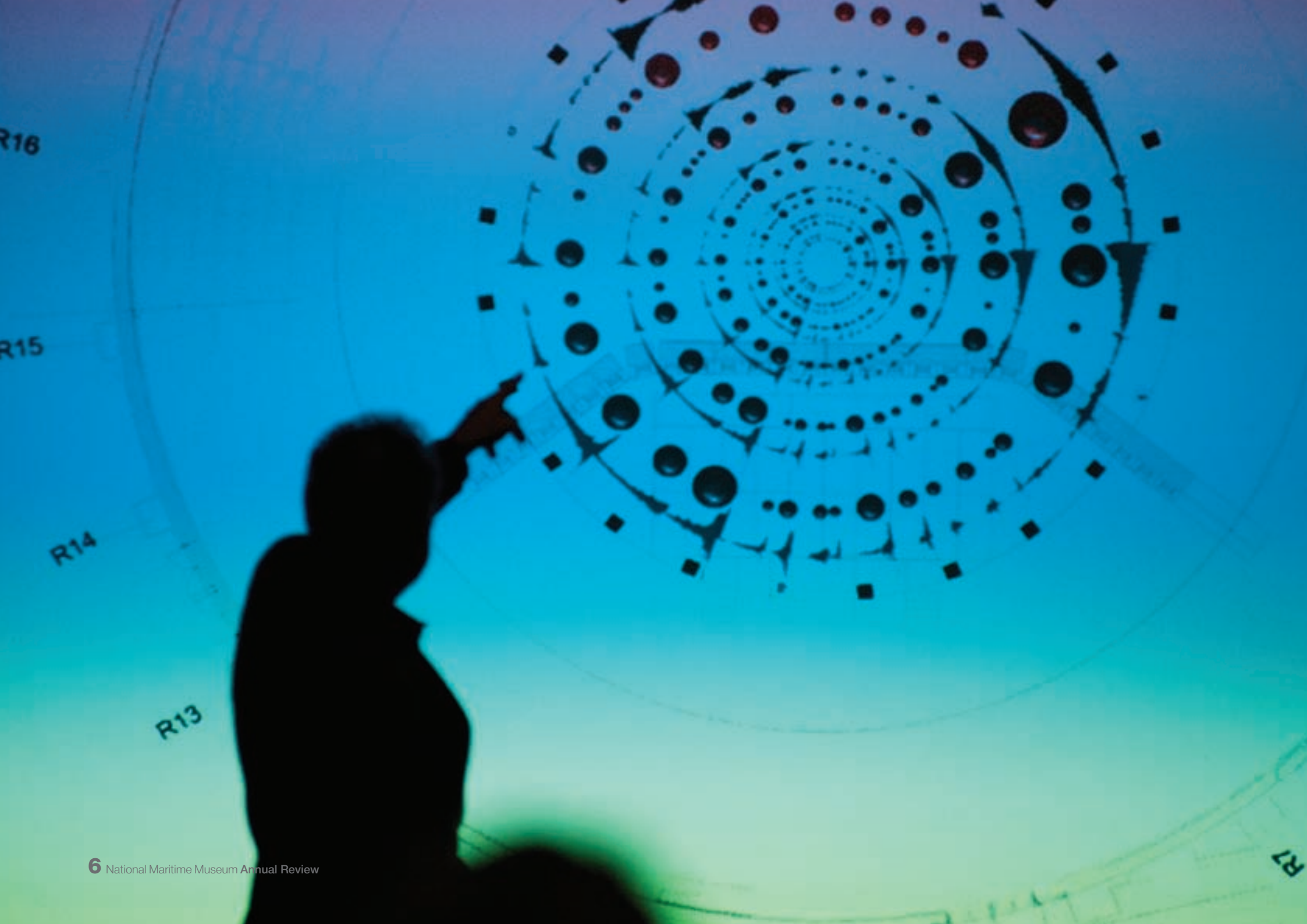
The Museum is fortunate to be able to draw on the support of its many stakeholders, and two groups of people vital to our success are our volunteers and Members. For the first time we have recruited a Volunteers Manager, Helen Webb, which has proved very beneficial. This year, our team of volunteers increased from 89 to 108 people, who contributed a record 16,000 hours to the Museum. We are also indebted to our Members for their continuing commitment. On 25 August 2009, former Friends committee members joined us to open the Royal Observatory's Meridian and Astronomer's Gardens, both of which had been upgraded with funding support from the Friends.

I am very fortunate as Director to have excellent support from my colleagues throughout the Museum in delivering everything that we have done. My thanks go to everyone involved for their dedication and efforts to make 2009–10 such a tremendously successful year. Despite the challenging financial times we anticipate, we are already looking forward to next year, which will see the completion of the splendid Sammy Ofer Wing. Meanwhile, we will continue to welcome as many visitors as possible to our campus of museums.

Kevin Fewster, AM, Director



We are already looking forward to next year, which will see the completion of the splendid Sammy Ofer Wing.



Activities, achievements and performance

During 2009–10

- There were 2.4 million visits to the Museum sites, a 15% increase and our highest-ever attendance figure for the second year running.
- The number of visits to the Museum's website was 10,367,000, an increase of 6.8%.
- The number of visits by children under 16 in formal education groups was 117,946, an increase of 11.7%.
- The number of children participating in outreach activities was 44,115, an increase of 82%.
- The number of adults taking part in public programme activities was 129,025, an increase of 5.4%.
- The number of overseas visitors was 1,271,875, an increase of 20%.
- A total of 120,210 people visited the Peter Harrison Planetarium, an increase of 41%.
- There were 12,772,049 Museum users, an increase of 8.1%.
- There were 139,786 visits by people from an ethnic minority background, an increase of 32%.
- There were 114,148 visits by people in NS-SEC groups 5–8, an increase of 36%.

Images (left): visitors seated in the Upper Deck café, Neptune Court, with reflections of the Old Royal Naval College below; (opposite): Festival of Time and Space, 'Greenwich Time Symposium', guests attend talks in the NMM Lecture Theatre.



This exhibition used objects, images and films to speculate on the ways in which our understanding of the present and possibilities for the future is shaped by what has gone before.

Jeremy Millar: Given

National Maritime Museum

The North-West Passage: an Arctic Obsession **May 2009 to January 2010**

Our major exhibition of the year told the story of the search for the North-West Passage, the trade route through the Arctic Ocean connecting the North Atlantic with the North Pacific. The route was sought by many of Britain's most famous explorers, including Captain Cook, Sir John Franklin, Sir John Ross and Sir William Parry. In the process, countless men lost their lives in the hostile Arctic terrain, through snowstorms, exposure, scurvy and starvation.

The exhibition drew on the extraordinary stories, feats of endurance and tragedies of the 19th-century British Arctic expeditions. It also explored the lives of the Inuit people, who have made their homes in these harsh conditions for thousands of years. Now, as the longstanding seasonal pattern of impassable ice shows clear signs of changing, the eyes of the world are once again turning to this contested region. The exhibition, supported by the Canadian High Commission, deployed the Museum's extensive polar collection to reveal the historical importance of the North-West Passage to 19th-century explorers, and why the Arctic is making headlines once more.

The Last of the Tall Ships: Photographs by Alan Villiers (1930–82) **December 2009 to April 2010**

This exhibition showcased a selection from the Museum's collection of photographs by its former Trustee, Alan Villiers. The striking images depicted life on merchant sailing vessels in the 1920s and 1930s.



Redisplay of Nelson's uniform

Part of the 'Maritime London' gallery was refurbished to provide a new display and interpretation of Nelson's Trafalgar uniform. This explores the Nelson story through the narrative of the Battle of Trafalgar and examines the impact that his funeral and commemoration had on the capital. Apart from the uniform itself, the new arrangement features an interactive digital representation of it, housed in a replica of the display case in which it was first publicly exhibited in the 1840s.

Touring exhibitions

Your Ocean toured over the past two years to the Beacon Museum, Whitehaven; The Tall Ship, Glasgow; St Andrews Museum; Caithness Horizons, Thurso; Hull Maritime Museum; Aberdeen Maritime Museum; and its final venue, the Time and Tide Museum in Great Yarmouth.

The Golden Age of Dutch Seascapes (entitled *Turmoil and Tranquillity* when first shown at the Queen's House in 2008–09) was seen by 60,000 visitors at the Peabody Essex Museum in Salem, Massachusetts.

The Queen's House

Jeremy Millar: Given **September 2009 to April 2010**

This evocative exhibition explored how events in history resonate with experience of the present. Jeremy Millar's starting point for a newly commissioned series of artworks was a journey to Papua New Guinea, made by the Polish-born anthropologist Bronislaw Malinowski and the artist Stanislaw Ignacy Witkiewicz in 1914. The exhibition used objects, images and films to speculate on the ways in which our understanding of the present and possibilities for the future is shaped by what has gone before.

Royal Observatory, Greenwich

Visions of Saturn **June 2009 to September 2010**

This exhibition brought together some of the best images from the Cassini-Huygens mission, with several favourites selected by the mission scientists themselves.

Astronomy Photographer of the Year **September 2009 to January 2010**

With over 540 entries from 25 countries, this exhibition showcased the best of these striking and often thought-provoking photographs – the winners, runners-up and highly commended in the competition's four categories.

Images (above): Nelson's uniform on display in the 'Maritime London' gallery; (opposite): inside the exhibition, Jeremy Millar: Given.

Royal Observatory, Greenwich



A number of improvements at the Royal Observatory in April 2009 greatly enhanced the aesthetic appeal and ambience of its spaces. The re-landscaped Meridian and Astronomer's Gardens opened, and new information points and sales desks were introduced.

During the summer months, the Observatory welcomed a record-breaking number of visitors, with over 18,000 on its busiest day ever.

The first Harrison timepiece, H1, returned to public display following a period of research, cataloguing and repair. Work on this timekeeper was widely reported in the national media and Jonathan Betts, Senior Curator of Horology, kept enthusiasts updated about his findings through a blog on the Museum's website.

In September 2009, the Museum introduced audio guides in different languages for the historical element of the site. Printed guides are now also available in English, Spanish, French, Italian and German.

On 22 October 2009, the Royal Observatory celebrated its 125th anniversary as the home of the Prime Meridian of the world, which received good national, regional and local media coverage.

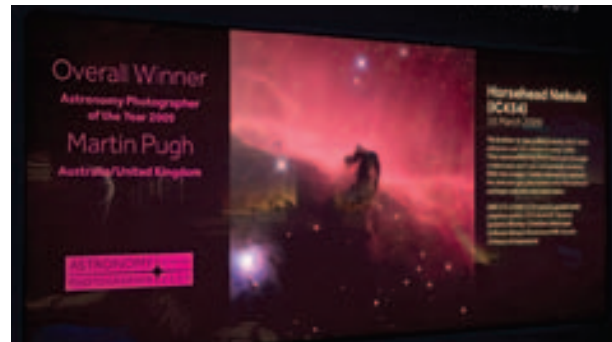
Images (above): the Peter Harrison Planetarium cone in snow; (opposite): inside Astronomy Photographer of the Year 2009.

International Year of Astronomy 2009

As a leading contributor to IYA 2009, the Royal Observatory presented a varied programme of astronomy-related events throughout the year. These included the launch of new planetarium shows and exhibitions, space-themed family days and the chance to meet leading scientists and hear them talk about the latest discoveries in astronomy and space science.

Highlights of the Royal Observatory's IYA programme included the following

- *Visions of Saturn*, an exhibition of photographs sent back by the Cassini spacecraft, which revealed the beauty of Saturn's clouds, rings and moons. This was accompanied by a series of evening talks in June by the international team of scientists behind NASA's Cassini mission.
- A *Doctor Who* season in August and September explored how science fact has influenced science fiction in books, movies and television shows. Highlights included a talk from Dr Paul Parsons, the author of *The Science of Doctor Who*, who explained why time travel has not been ruled out by the laws of physics and how genetic engineering is being used to breed Dalek-like designer life-forms.
- The *Astronomy Photographer of the Year* exhibition: this included winning images from the competition run in collaboration with *Sky at Night* magazine and the popular photo-sharing website, Flickr. The three main categories were Earth and Space, Our Solar System and Deep Space, and there was a special award for the under-16s – Young Astronomy Photographer of the Year.



- *Autumn Moonwatch* in October provided a week-long opportunity to view the Moon's mountains and craters through the Observatory's 28-inch telescope, the largest refracting telescope in the UK.
- The month-long Festival of Time and Space in November looked at the ways in which astronomy and the arts influence each other. Special events during the festival included students from Trinity College of Music performing space-themed pieces around the Observatory site, and the renowned astronomer (and NMM Trustee) Professor Jocelyn Bell Burnell discussing her twin passions for poetry and science.

Peter Harrison Planetarium

During 2009–10, three new planetarium shows were introduced.

Ice Worlds, narrated by Emily Watson, opened in May. Visitors went on a tour of the frozen moons and planets of the Solar System, including the polar ice caps of Earth itself.

We Are Astronomers was launched during October half-term. The show was produced as part of IYA 2009 by a UK partnership led by Leicester Space Centre and including the Science and Technology Facilities Council and seven planetariums in the UK (the Observatory's among them).

Secrets of the Sun was part of the Solar Season in February 2010, which linked planetarium shows, exhibitions, digital projects and public programmes.

Exhibitions and public programmes

Solar Season: Understanding the Sun

As part of the Solar Season, the *Solar Story* exhibition used striking images to tell the story of astronomers' attempts to understand the nature of the Sun and its effects on Earth.

The theme for the International Year of Astronomy was 'The Universe – yours to discover'. Here in Greenwich we wanted to give everyone the opportunity to do just that.

Dr Marek Kukula, Public Astronomer at the Royal Observatory, Greenwich

Learning

Science

The Science Learning team secured a £250,000 grant from Lloyd's Register Educational Trust (LRET). This supports the capital funding received as part of the Time and Space Project for the LRET Learning Centre at the Royal Observatory.

The Science Learning Department now provides seven-day-a-week operational support for the Peter Harrison Planetarium, helping to deliver the Excellence in Science Initiative and a growing public programme.

Citizen science

In December 2009, the Museum launched its first on-line citizen science project. Solar Stormwatch (www.solarstormwatch.com) invites amateur astronomers to help scientists spot and track solar storms in video data from NASA's STEREO mission.

Solar Stormwatch attracted press attention from *The Times*, BBC World Service, BBC *Sky at Night* and all popular astronomy magazines, among others.

The Museum has also become a partner with the University of Oxford, the Met Office and the Naval-History.net community to develop a new citizen-science website about naval history and climate science. Funded by the Joint Information Systems Committee (JISC), this project will publish images of Royal Navy logbooks from 1914 to 1923 and invite people with an interest in the subject to transcribe the meteorological data found in them. The use of such nautical documents to understand climate and weather better will make a substantial contribution to the communication of the Museum's subjects, as it demonstrates the contemporary relevance of historical collections.

Summing it Up

During February and March 2010, the Learning team worked in partnership with Greenwich and Lewisham Young People's Theatre (GLYPT) and James Wolfe Primary School on the *Summing it Up* project, designed to improve pupil motivation and attainment in science and maths. Children from years 3, 4 and 5 visited the Museum and worked with actor characters to complete challenges relating to its collections.

Teachers reported that the project had significant success and GLYPT is keen to run similar ones in future, in partnership with the Museum and other local schools.



Adult learning

On Valentine's Day weekend in February 2010, the Museum ran *Love in the Archives* as part of the History and Heritage Adult Learning Network. This is supported by the government's Transformation Fund with the aim of encouraging non-attending adult audiences to visit museums, libraries and archives. The event gave visitors the chance to view love letters not usually on public display. It included afternoon tea and proved so popular that additional sessions were added.

Family programmes

The Greenwich Family Learning Festival was held at the Museum in October 2009. It focused on the theme of the *North-West Passage* exhibition and was the outcome of local family learning providers working together to promote the wealth of opportunities on offer in the area. The event was part of a national initiative to encourage engagement in family learning activities that enable children and adults to develop literacy, language and numeracy skills together.

The February 2010 half-term holiday programme was devoted to celebrating the Chinese New Year of the Tiger. Over 350 families enjoyed a day of performances in collaboration with Greenwich Chinese Community School. Additional activities included a traditional Lion Dance and film screenings.

A refreshed Early Years programme, running on Tuesdays, is regularly attended by around 60 participants. The sessions are being used to test ideas for a planned gallery for children aged under eight.

Images (left): Chinese New Year celebrations on the Upper Deck; (opposite): a member of the Youth Advisory Group performing in the 'Passengers' gallery.



Learning

Youth engagement

The Youth Advisory Group is contributing to the new gallery focusing on the East India Company and its legacy by researching and producing a short film to be included in the display. The group is also planning a programme to encourage young people (aged 13 to 24) to visit the new gallery and engage with its themes.

Understanding Slavery

The Understanding Slavery Initiative (USI) has extended its partnership to include the Museum of London (Museum of London Docklands) and the American Museum in Britain (Bath).

USI has begun to develop approaches for the use of museum collections in teaching and learning about transatlantic slavery at primary school level. Consultation with teachers and stakeholders has been undertaken, and a pilot programme developed.

USI has also held discussions with Anti-Slavery International to plan teacher-training provision as an important next step in supporting learning about the history and legacies of transatlantic slavery. The Museum is currently working with the Institute of Education (London University), London Metropolitan University, the University of the West of England, the University of Birmingham, the School of Education at the University of Brighton and the University of Chichester to develop an initial teacher-training module.



VISIT
LONDON
AWARDS 2009

GOLD WINNER

- The Museum won three Visit London awards in November 2009

Gold Award
for Visitor Attraction of the Year.

Gold Award
for Best Tourism Experience for International Year of Astronomy at the Royal Observatory.

Bronze Award
for Outstanding Customer Service to Nick Babbs at the Royal Observatory.

- The Museum's Solar Stormwatch website (www.solarstormwatch.com) won the Best Innovative Site category at the international 'Museums and the Web' conference in Denver, Colorado.

- In February, the Formal Learning team collected the Sandford Award for excellence in heritage education from HRH The Earl of Wessex, in a ceremony at Windsor Castle.

- The Museum won the Mountbatten award for Best Maritime Book at the 2009 Maritime Foundation Media Awards. The winning book was a biography, *Alan Villiers: Voyager of the Winds*, written by Kate Lance. Villiers was a passionate sailor, a prolific author, an accomplished photographer and a Trustee of the Museum for over 30 years.

Images (left): a Museum retail assistant at the Meridian information point, Royal Observatory; (opposite): fireworks over the Queen's House during the Greenwich and Docklands International Festival.

Expertise

Research is a core activity for the National Maritime Museum, vital for the good stewardship of our collections and the intellectual development of our subjects. It is the foundation for our activities, including exhibitions, other programmes and publications (on-line and in print), which connect with and inspire visitors and wider audiences.

The Board of Longitude, 1714 - 1828: Science, Innovation and Empire in the Georgian World

This five-year research project, in collaboration with the University of Cambridge, was awarded an Arts and Humanities Research Council (AHRC) grant of £763,000 in December 2009. Its aim is to produce the first major history of the Board of Longitude, to coincide with the Board's tercentenary in 2014. Linked exhibitions at the Museum are also being planned.

Publications

A new catalogue, *Sextants at Greenwich*, was published jointly by Oxford University Press and the Museum, the fourth in the 'at Greenwich' series. It was compiled by the 2005-07 Sackler Fellow, Dr Willem Mörzer Bruyns, with an introduction to the history of the collection by Dr Richard Dunn, Curator of Navigation.

Health and Medicine at Sea, 1700 - 1900, a collection of papers edited by David Boyd Haycock and Sally Archer, was published by Boydell & Brewer in November 2009.



Image (above): the front of John Harrison's second marine timekeeper (H2).

Research fellowships

The Museum supports a range of fellowships that foster research into its collections and subject areas.

In 2009–10 these included:

Sackler-Caird Research Fellowships

Dr Jan Rüger, Birkbeck College, University of London
Contested Island: a History of the Anglo-German Relationship

Dr Kirsty Reid, University of Bristol
Australia Bound: Convict Voyages, 1788–1868

Caird Junior Research Fellowship

Dr James Davey, Greenwich Maritime Institute
The Victualling of the Baltic Fleet, 1808–12: Communication Times During the Napoleonic Wars

Caird North American Fellowship

Dr Marina Carter, University of Edinburgh
American Maritime Trade with the Isle of France (Mauritius), 1790–1808

The Crown Estate Caird Research Fellowships

Hannah Evans, British Geological Survey
Geomorphic Evolution of the Great Yarmouth Coastal System

Dr Susan M. Brooks, Birkbeck College, University of London
Coastal Change in Historic Times (past 200 years): linking offshore bathymetric change and cliff recession

Anna Bakare, University College London
Investigating the Morphodynamic Seabed Characteristics of the Norfolk Banks and Channels System

Caird Short-Term Research Fellowships

Dr Alison Cathcart, University of Strathclyde
The Maritime History of the Atlantic Archipelago, c.1450–c.1650: an exploration of maritime affairs in the Irish Sea in general and the North Channel in particular focusing on the emergence of a 'British' maritime policy

Jeong-yon Ha, University of Edinburgh
The Visual Representation of the Downriver Thames

Don Leggett, University of Kent
Ships of Science: the Cultural Construction of Naval Power, 1890–1918

Catherine Kelly, Wellcome Unit for the History of Medicine, University of Oxford
Health and Medicine in the 19th-century Navy

Sackler-Caird Short-Term Fellowship

Dr Martina Schiavon, Université Nancy 2 – CNRS
The Board of Longitude and the Bureau des Longitudes (19th-20th centuries): a Comparative Study

AHRC Collaborative Doctoral Studentships in Residence

Philip Rich, with University of Sheffield, *The Culture of Cruising: Post-War Images of Oceanic Cruises in the NMM Film Archive*

Anyaa Anim-Addoo, with Royal Holloway, *Steam after Slavery: the Royal Mail Steam Packet Company in the Post-Emancipation Caribbean, c.1834–70*

Lindsay Doulton and Mary Wills, with University of Hull, *Anti-Slavery and the Royal Navy in the Atlantic Ocean, 1810–90: Race, Empire and Identity*

Harriet McKay, with Kingston University, *Accommodating the Passenger: Interior Design for the Union Castle Line, 1945–77*

Charlotte Mullins, with University of Sussex, *The World on a Plate: the Impact of Photography on Travel Imagery and its Dissemination in Britain, 1839–88*

John Moyle, with University of Leeds, *The Telegraphic Life: Recovering the Work of Submarine Cable Technicians, 1850–1914*

Helen Reddick and Hazel Sheeky, with University of Newcastle upon Tyne, *Popular Narratives of Exploration in Children's Literature from the 18th to the 20th Century*

Claire Warrior, with University of Cambridge, *Exploring Histories: Polar Exploration and the Construction of History at the NMM*

Geoff Snell, with University of Sussex, *Thames Rising: Representations of the River Thames in 18th-century Culture*

Sophie Carney, with University of Roehampton, *The Queen's House at Greenwich: the Material Culture of the Courts of Anna of Denmark and Henrietta Maria, 1603–69*

Conferences, lectures and symposia

The Centre for Imperial and Maritime Studies Annual Lecture, Keith Jeffery, 1 April 2009

British Maritime History Seminars, 7 April–19 May 2009

Naval Dockyards Annual Conference, 25 April 2009

Anti-Slavery Symposium, 1 June 2009

The Long View Conference, 16–18 July 2009

Society for the History of Astronomy Conference, 18 July 2009

Steam, Sail and Science Conference, 11 September 2009

Royal Institute of Navigation Conference, 23 September 2009

Museum and Empire Symposium, 30 October 2009

Spending on War Symposium, 6 November 2009

Collections

Acquisitions

Notable acquisitions in 2009–10 included

- An important collection of items associated with the 5th Astronomer Royal, Nevil Maskelyne, during his time at Greenwich (1765–1811). They include an orrery, medals awarded to Maskelyne by the Russian Empress Catherine II, correspondence, and a rare collection of clothing belonging to Maskeleyne, his wife Sophia and daughter Margaret, including a padded Indian silk observing suit that was probably a gift from his brother-in-law Robert Clive ('Clive of India').
- A collection of 139 flags, mainly the house flags of shipping lines using the Port of London, assembled by Daniel Bolt before the Second World War. Highlights include the Governor's flag of the Hudson Bay Co.
- A Mark I Lewis gun, which was presented to Lieutenant-Commander Hilton-Young, RNVR (later 1st Lord Kennet, 1879–1960) by the company of HMS *Vindictive*. This Victorian cruiser was fitted out as an assault ship and took part in the Zeebrugge raid in April 1918.
- The autobiography of James Richardson (b. 1784), dated 1843. This manuscript volume tells the life story of Richardson, a merchant sailor impressed into the Royal Navy during the Napoleonic wars.

Loans

Loans to other museums during the year included the following

- 26 objects to the Art and Exhibition Hall of the Federal Republic of Germany in Bonn, for the exhibition *James Cook and the Exploration of the Pacific*. This subsequently transferred to the Museum of Ethnology, Vienna.
- Collection items to, among others: Tate Britain; Chatham Historic Dockyard; Birmingham Museums & Art Gallery; Yale Center for British Art, New Haven; Museo Nacional del Prado, Madrid; Portcullis House, Palace of Westminster; and Plymouth City Museums & Art Gallery.

Conservation

The Glorious First of June Union flag returned to the Museum following extensive conservation treatment supported by a very generous grant from the Charles Hayward Foundation. It was the command flag of Richard, Earl Howe (1726–99), as Admiral of the Fleet, and was flown on his flagship *Queen Charlotte* during the first fleet action of the French Revolutionary War on 1 June 1794. The flag can now be seen in its true colours and is preserved for many future generations to enjoy.

Public access

The Conservation Department continued to host visits to the studios, including by 17 students from the Conservation Masters programme at Bucks New University. There were 893 public visits to the Museum's collections stores during the year.

Archive and Library

As an essential part of the planning for the Sammy Ofer Wing, the decanting of the South-West Wing was completed on time and on budget. This included the library and archive store, and the galleries.

The Caird Library continued to provide access to the collections while this was in progress, and has successfully run an interim service while the new reading room and archive stores are being built.

Six of the Museum's most popular research guides, on tracing family history and the merchant navy, have been revised and are available through the Museum's website. Researched and written by the highly respected merchant naval historian and genealogist, Dr Christopher Watts, they have been updated to include new on-line resources such as those in *DocumentsOnline* at the National Archives.

All of the Library's bibliographic catalogue records (over 70,000) are now available through Worldcat.org, making the collections more accessible.

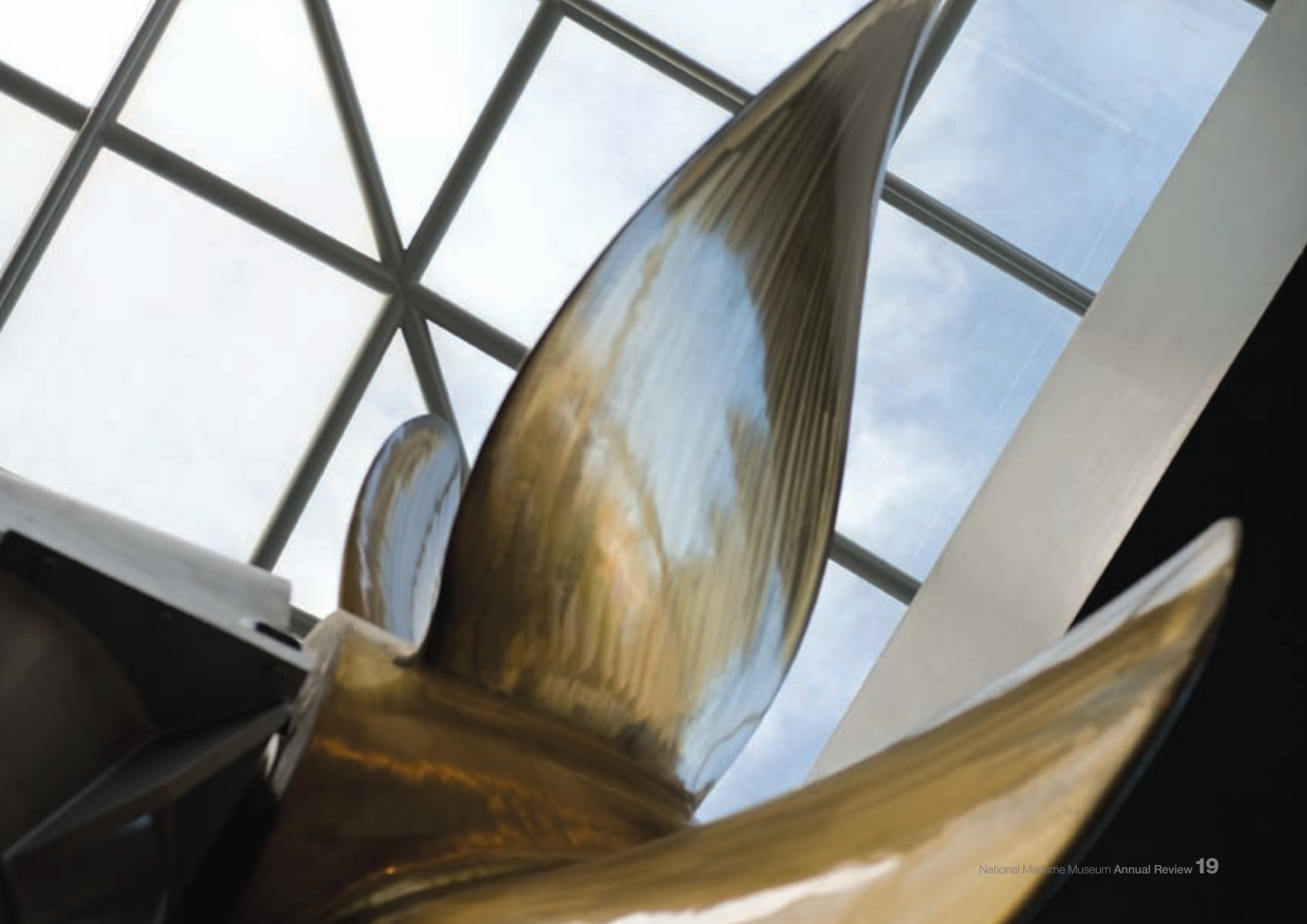
National Museums at Chatham

The National Museums at Chatham project is led by Chatham Historic Dockyard Trust, which has redeveloped one of the listed buildings, No.1 Smithery, to house permanent galleries, a special exhibitions gallery, learning facilities, viewing access to historic elements of the building, collections stores and a collections study area.

The National Maritime Museum is moving its ship models to No.1 Smithery and will assume responsibility for the stores and study area. Imperial War Museum ship models will also be moving to the same stores. The collections study area is due to open for public appointments from February 2011.

Six of the Museum's most popular research guides, on tracing family history and the merchant navy, have been revised and are available through the Museum's website.

Image (opposite): Type-23 frigate propeller, Neptune Court.



Membership and Development

Heritage Lottery Fund

The Museum has secured grant funding of £4.7 million from the Heritage Lottery Fund for the Sammy Ofer Wing project, of which £327,000 was drawn down in 2009–10.

Individual giving

All existing US and UK Patrons have renewed and Anthony Inder Rieden joined the Museum as a Life Patron. The Director visited the US for the opening of *Turmoil and Tranquillity* (retitled *The Golden Age of Dutch Seascapes*). This helped to renew existing US Patrons and encouraged the recruitment of two new US Patrons.

Membership

An increase in the number of families joining as Museum Members is closely linked to the offer of free admission to the Peter Harrison Planetarium.

The Members' annual *Sea Words* literary dinner was held at the Trafalgar Tavern on 12 November 2009. Libby Purves recruited a dazzling array of performers for the evening, including Peter and Dan Snow, the actress Diana Quick and Mike Perham, the youngest male sailor to solo-circumnavigate the globe.

The Museum would also like to thank the following for their generous support:

Government

The Department for Culture, Media and Sport
The Heritage Lottery Fund
The Department for Children, Schools and Families

Major Donors

The Sammy Ofer Foundation
The DCMS/Wolfson Foundation Museums and Galleries Improvement Fund
Lloyd's Register Educational Trust
Science & Technology Facilities Council
The Peter Harrison Foundation

Donors

Arts Council England, The Friends of the National Maritime Museum, The Charles Hayward Foundation, The Inchcape Foundation, The Leathersellers' Company Charitable Fund, The Poppy Centre, The Royal Society, The Sackler Foundation

Bequests

Jack Cooper, Peter Alastair, Howard Glover

The American Fund of the National Maritime Museum and the Royal Observatory Greenwich (EIN 30-0190984) Supporters

Dayton Carr, Stephan Frank, C. Richard Carlson, Gary and Beth Glynn, Lee MacCormick Edwards and Michael Crane, Howard and Patricia Lester, Terez Rowley, David Wells, The Gladys Kriebel Delmas Foundation, The John Templeton Foundation

Sponsors

The Crown Estate, The Swire Charitable Trust, The Maritime and Coastguard Agency

Corporate Members

Accor UK, BMT Group Ltd, BP Shipping, Braemar Seascope, Clarksons, Evergreen Shipping Agency (UK) Ltd, General Maritime Corporation, Ince & Co, Liberty Syndicates, Lloyd's Register, Shell International Trading and Shipping Co. Ltd, The Baltic Exchange

Corporate Loan Holders

The Orrery Restaurant, Mandarin Oriental Hyde Park Hotel, Pemberton Greenish, Rathbone Brothers plc, Simpson, Spence and Young Ltd, The Cayzer Trust Company, The Leathersellers' Company

Life Patrons

William Falconer, Anthony Inder Rieden

Patrons

Terence Cuss, Lady Shauna Gosling, Peter Linstead-Smith, John Manser, Clive Richards OBE DL, Patricia Rothman, David Wells

Honorary Commodores – awarded for outstanding support and commitment to the Museum

Sir David Attenborough OM, Victor Benjamin, Richard Carlson, Professor Martin Daunton BA, Sir David Hardy, Peter Harrison, Zvi Meitar M. Jur, Sammy Ofer KBE, Libby Purves OBE, Dr David Quarmby CBE, Lord Rees of Ludlow, Professor N. A. M. Rodger FBA, the late Dr Mortimer Sackler and Mrs Theresa Sackler, Coral Samuel CBE, Peter Snow CBE, Dava Sobel, Dr David Starkey, Sir Arthur Weller CBE, the late Lord Wolfson of Marylebone, Susan T. Zetkus



Donors to the Collection

During the year, items were presented, bequeathed or given in lieu of tax (via HM Treasury) to the Museum by the following: John Alcock, Pam Arnold-Forster, Jacqueline Cooper, Alan Collis, Susan Custance, Tracy Edwards, Richard Farnfield, Ben Gaze, Frank Gilbert, Commander L. L. Grey, Keith Herriman, Robert Holderness-Roddam, Edward Horne, John D. Horrell, Michael S. Igglesden, Derek P. Ings, John Iredale, C. W. Kellock & Co, Lady Kennet, Keith Langdale-Brown, Maritiem Museum Rotterdam, Anne Miller and Yaniv Tayari, Russell Phillips, Mrs J. Rutter, Doreen Scotland, Mark Thres, Barbara Tomlinson, June Mary Vince, Charles J. Warner, Captain John R. Williams, Yachting Press Ltd

To all of our supporters, the Trustees are very grateful.

*Images (above): visitor at the North-West Passage exhibition;
(opposite): on the Upper Deck, Neptune Court.*

People

- During 2009–10 **volunteers** contributed over 16,000 hours to the Museum.
- In October 2009, the Museum received reaccreditation as an **Investor in People**.
- The Museum continues to operate a **shelter programme** to support individuals returning to work after a period of long-term unemployment. To date the Museum has hosted seven placements and three of these have moved into paid employment.

Image: approach to the National Maritime Museum.

Sammy Ofer Wing



There has been good progress since planning permission and listed building consent were granted in the spring of 2009. Bovis Lend Lease was appointed as the main construction team and demolition of the Museum's Regatta Restaurant and kitchen began in October. By November, work had started on the excavation of the 1833 swimming pool (in use for a century before the buildings changed from a school for the children of seafarers to a museum in the 1930s). The basement for the new special exhibitions gallery had been dug by the end of March and its concrete floor was in place by the end of April. The South-West Wing was completely gutted in preparation for the installation of a new steel structure to take the weight of the archive collections.

There has been regular communication with key stakeholder groups, and project teams have kept disruption of the Museum's everyday business to a minimum. A wider range of staff across the Museum are now engaged in planning the fit-out and the programme of activities which need to be completed before the opening of the new wing in the summer of 2011.

*Images (main): building work beginning on the new wing;
(top): Sammy Ofer visiting the site with Kevin Fewster and Lord Sterling;
(bottom): the unveiling of the foundation stone, with the Ofer family.*

Finance

Following Government policy, the Museum seeks to ensure that optimum use is made of all resources during the financial year and, in so far as it is consistent with its objectives, seeks to maximize non-exchequer resources generated through commercial activities.

In 2009–10, the Museum was funded primarily by Grant-in-Aid from the Department for Culture, Media and Sport (DCMS). Of the £19.24 million received in the year, £257,000 was allocated to the Historic Ships Unit and £3 million to the Sammy Ofer Wing project.

In addition, during the year, the Museum received capital donations amounting to £3.3 million from the Sammy Ofer Foundation and £1.1 million from the Heritage Lottery Fund for the construction of the new Sammy Ofer Wing.

The commercial team had its biggest-ever trading year with turnover of £2.3 million. Despite a difficult trading environment for commercial events in particular, most teams significantly exceeded their budgeted profit contribution.

Full details of the Museum's activities and incoming/outgoing resources can be found in the National Maritime Museum Annual Report and Accounts 2009–10, available from the Director of Finance and Enterprises at the Museum, or by reference to the website <http://www.official-documents.gov.uk>

*Images (right): view from 'The Bridge' gallery;
(opposite): NMM Shop – retail products on display.*





ROYAL OBSERVATORY
GREENWICH



PLANETARIUM
GREENWICH



Board of Trustees and Executive

During 2009–10 the Board of Trustees were:

Lord Sterling of Plaistow GCVO CBE, Chairman reappointed on 5 April 2009

and in order of first appointment:

His Royal Highness The Duke of York KG KCVO ADC to 14 June 2009

Professor Dame Jocelyn Bell Burnell DBE FRS FRSE to 4 December 2009

Professor Martin Daunton FBA to 13 February 2010

Councillor Jagir Sekhon OBE

Nigel Macdonald

Jan Kopernicki

Gilly Drummond OBE DL

Sir John Guinness CB

Admiral the Lord Boyce GCB OBE DL

David Moorhouse CBE reappointed on 28 October 2009

Dr David Quarmby CBE reappointed on 28 October 2009

Linda Hutchinson

Sir Robert Crawford CBE

Appointments since the year end are:

Eleanor Boddington appointed on 8 April 2010

Professor Geoffrey Crossick appointed on 8 April 2010

Dr Chris Lintott appointed on 24 June 2010

Brief biographies of the Trustees are available from www.nmm.ac.uk in the 'About Us' section.

During 2009–10, members of the Executive were:

Dr Kevin Fewster AM Director and Accounting Officer

Dr Margarete Lincoln Deputy Director

Andy Bodle Director, Operations and Human Resources

Angela Doane Director, Collections

David Philip Director of Finance and Enterprises

Sarah Roots Director, Royal Observatory, Greenwich

Kevin Sumption Director, Exhibitions and Programmes

*Images (back cover): Flamsteed House at night;
(inside fold): visitor looking at meteorite, Astronomy Centre,
Royal Observatory; (opposite right): schoolchildren on the Great Hall
marble floor, Queen's House; (opposite left): Greenwich and Docklands
International Festival 2009 – images of the performance 'Water Music'
on Queen's House façade.*



 Maritime GREENWICH
A WORLD HERITAGE SITE

Designed by *Virtuality*, www.vtaltld.co.uk Printed by *Purbrooks*, www.purbrooks.co.uk

Images © NMM.