



Royal Observatory Greenwich

The Royal Observatory Greenwich is the home of Greenwich Mean Time and the Prime Meridian of the World.

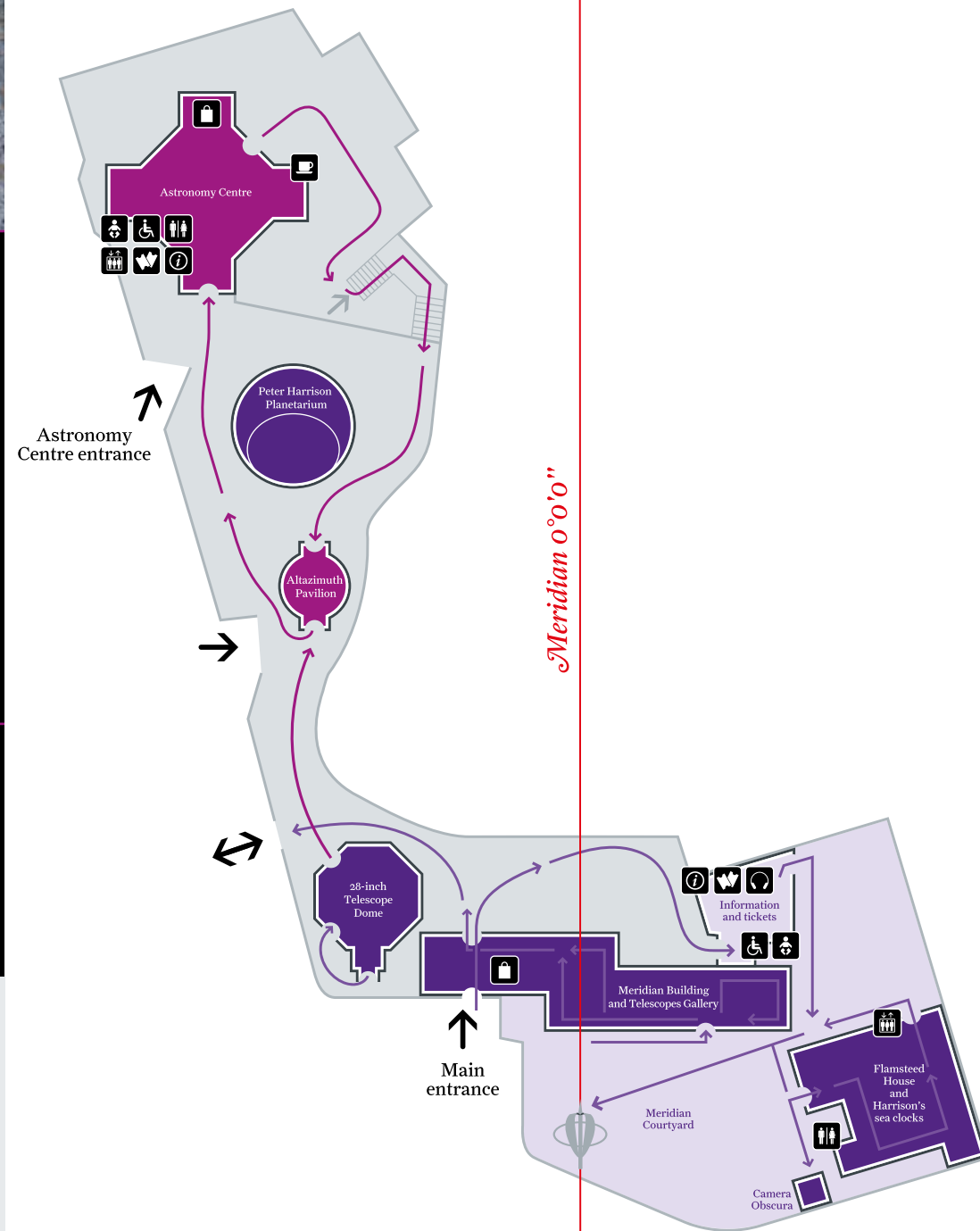
At this internationally-renowned site you can journey to the other side of the Universe in London's only planetarium, straddle two hemispheres in the Meridian Courtyard, and marvel at the scientific discoveries that changed our understanding of time and space.

Admission to the Astronomy Centre is free. Admission charges apply to Flamsteed House, the Meridian Courtyard, planetarium shows and some events.

Peter Harrison Planetarium

See the stars in a whole new light in a spectacular cinematic experience at London's only planetarium. To book tickets or find out more call **020 8312 6608** or visit rmg.co.uk/planetarium

- | | |
|------------------|-------------------------|
| Information desk | Toilets |
| Ticket desk | Accessible toilet |
| Audio guides | Baby changing |
| Lift | Meridian Line sculpture |
| Astronomy Café | Admission free |
| Gift shop | Tickets required |



Flamsteed House and the Astronomers Royal's apartments

See where the Astronomers Royal lived and worked while they observed the movements of the stars above.



Octagon Room

View the room where the regularity of the Earth's rotation was tested by the first Astronomer Royal in order to chart the stars.



Harrison's sea clocks

Discover how John Harrison's famous sea clocks helped solve the Longitude problem in the 18th century.

Meridian Courtyard

Stand with one foot in the west and one foot in the east on the world-famous Prime Meridian of the World, Longitude 0° 0' 0", and purchase the official Meridian Line certificate.



Meridian Building and Telescopes Gallery

Step across the original Meridian lines and see the telescopes that helped change our understanding of the night sky.