



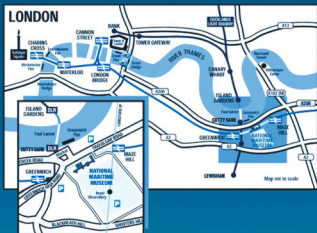
Now they're  
reaching for them

2002

Explorers navigated  
by the stars

1577

## GETTING TO GREENWICH



### By Rail

Docklands Light Railway to Cutty Sark for Maritime Greenwich  
Connex: London to Greenwich in about 20 minutes from  
Charing Cross/Waterloo East/Cannon Street/London Bridge.

### By River

Catch the riverboat to Greenwich from:  
Westminster/Waterloo/Embankment or Tower Piers.

### By Road

Recommended road connection from M25 via A2 Junction or  
M11/A12 Blackwall Tunnel.

London Travel Information: 020 7222 1234

Greenwich Tourist Information: 0870 608 2000

### OPENING TIMES

Open: 10.00 – 17.00 daily

Late Summer Opening 28th June – 31st August: 10.00 – 18.00

Last Admission: Half hour before closing

Closed: 24th – 26th December

### ADMISSION FREE (excluding special exhibitions)

Oceans of Discovery - Adults £3,  
Children, seniors and concessions: Free

For further details on admission prices, school visits and  
disabled access contact:

National Maritime Museum, Greenwich, London SE10 9NF

Tel: 0870 780 4263

[www.nmm.ac.uk](http://www.nmm.ac.uk)

All information is correct at time of print and is subject to change.



is the National Maritime  
Museum's latest  
exhibition examining the  
human face of  
exploration and  
the voyages that have  
helped mould our  
understanding of the  
world today. From  
Polynesians and Vikings to the  
development of underwater exploration, relive  
the remarkable tales of our early  
adventurers. Admission charge applies.

## Oceans of Discovery

The Museum invites you to  
delve into the past, present and future of the sea in  
exciting, new and interactive ways  
to draw a vivid picture of the importance of  
our oceans.

The National Maritime  
Museum includes three  
sites – the Museum,  
Royal Observatory  
and Queen's House  
and is the largest  
and most  
comprehensive  
museum of its kind  
in the world.



explore the National Maritime Museum, Greenwich.  
Journey across oceans,  
across space and across time as you

# THE VOYAGE OF YOUR LIFE

Not much fun underwater  
1903

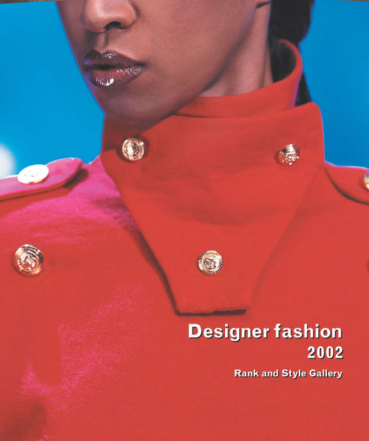
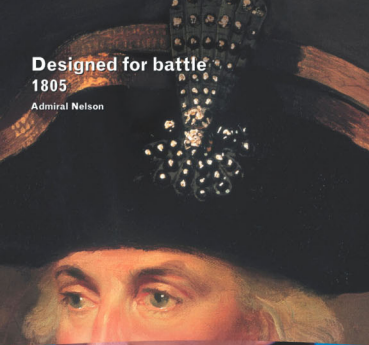


Fun underwater  
2002



## Designed for battle 1805

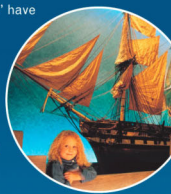
Admiral Nelson



## Designer fashion 2002

Rank and Style Gallery

'All Hands' and 'The Bridge' have been **designed with kids of all ages in mind**. Take the helm of a Viking longship, steer a paddle steamer, try underwater exploration, **shoot a cannon** and load a cargo ship.



In the 'Nelson' gallery, see Nelson's bloodstained coat and **relive the amazing story** of one of Britain's greatest naval heroes.

Behind the doors in 'Rank and Style' examine the individual uniforms and items of clothing and learn how civilian

**fashion has been influenced by maritime styles.**



Originally a private

retreat, the Queen's House now displays the Museum's fine collection of paintings. **Come face-to-face with the seafarers of the past** in A Sea of Faces exhibition, watch artists at work or learn the story of 'Historic Greenwich' at this exciting venue for visual arts.



Experience the astronomical world at the Royal Observatory - **stand across the Meridian Line**, Longitude 0°, where east meets west; discover how Harrison solved the problem of longitude and **see the largest refracting telescope in UK.**



Close by you'll find many other attractions for the whole family including the Old Royal Naval College, craft markets, the Fan Museum, Greenwich Park and Cutty Sark.

Come on board Cutty Sark and discover why this world-famous tea clipper was the fastest lady of her day.

Admission charge applies.  
[www.cuttysark.org.uk](http://www.cuttysark.org.uk)

Situated in spectacular historic Greenwich and only a short rail or riverboat journey from the West End, **the National Maritime Museum is a perfect day out for all the family.**

## It's the voyage of your life

ACROSS OCEANS ACROSS SPACE ACROSSTIME

## All time and space is measured from Airy's Meridian Line 1884



Left hand: west  
Brains: absolute zero  
2002