

My visit to the *Cutty Sark*

You can use this guide to help you choose what you want to see and do
at the *Cutty Sark*

The *Cutty Sark* is a big ship which has been made into a museum.

When I see the tall ship masts I know I am there!



You can enter the Cutty Sark through these doors. They are automatic so make sure you stand back!



Things might look a little different this time. We have made the necessary changes to make the ship safe...



You might have to join a socially distanced queue outside for a few minutes...



Inside the ship you will see...

A visitor assistant wearing a face covering and a hand sanitiser station. We will ask you to sanitise your hands – if you have your own then use that!



The ticket desk and shop. Barriers make a quiet beeping noise when you enter, just like a train or a bus.



There are lots of things to see in the shop, but you will have to wait until the end of your visit before you can buy anything!

Now it's time to enter the ship. Follow the big orange arrows.

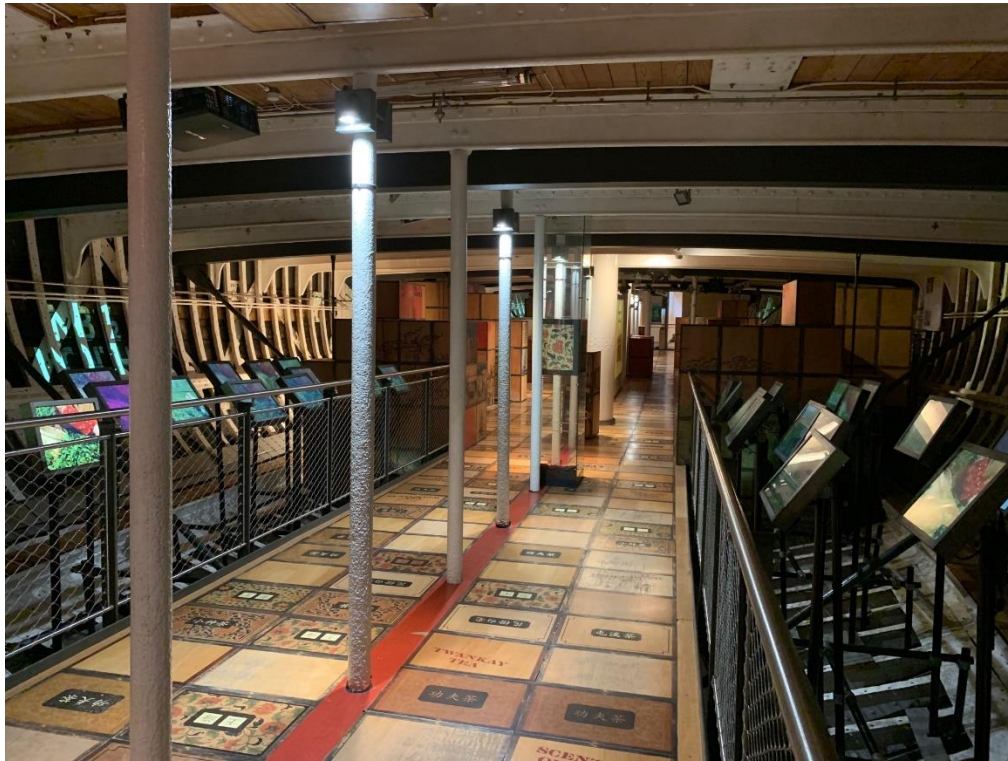


You enter the ship through a doorway in its side.



Lower hold

This place is dark and small, and it smells a bit like tea.

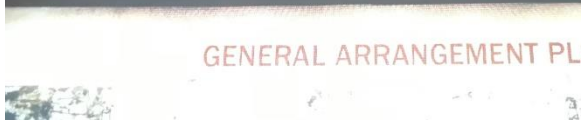


Make sure you keep to the one way system! There will be signs to remind you on your way around.



In this room you can....

Listen to and watch different things – you won't need to touch anything to do so!



Stamp your explorers trail if you picked one up at the entrance



You can then the stairs or this lift to get to the 'Tween Deck



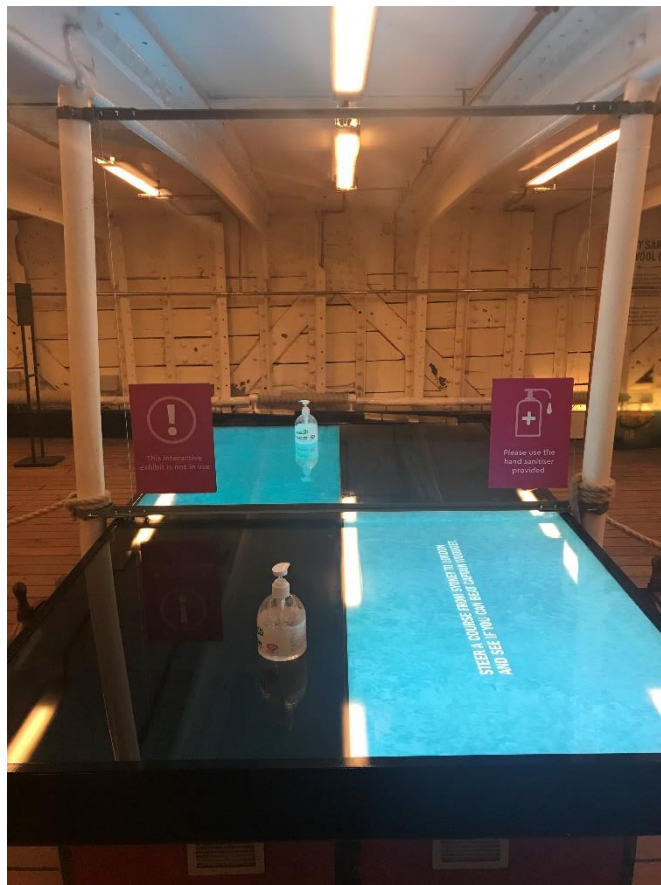
T'ween Deck

This space has low ceilings.



In this room you can...

Play on a digital interactive game



Use the stairs or the lift to get to the...

Main Deck

This space is out in the open so it can be cold. The floors are smooth and can be slippery when wet.



There is a one way system in place here so look out for signs:



On deck you can....

Search for the animals Captain Woodget kept on board (these aren't alive, but you might be able to hear them)

And see the Captain's Cabin! (This place is small and narrow, but quite light!)



Once you have exited the Captain's Cabin, make your way over the bridge. There are disabled toilets here:

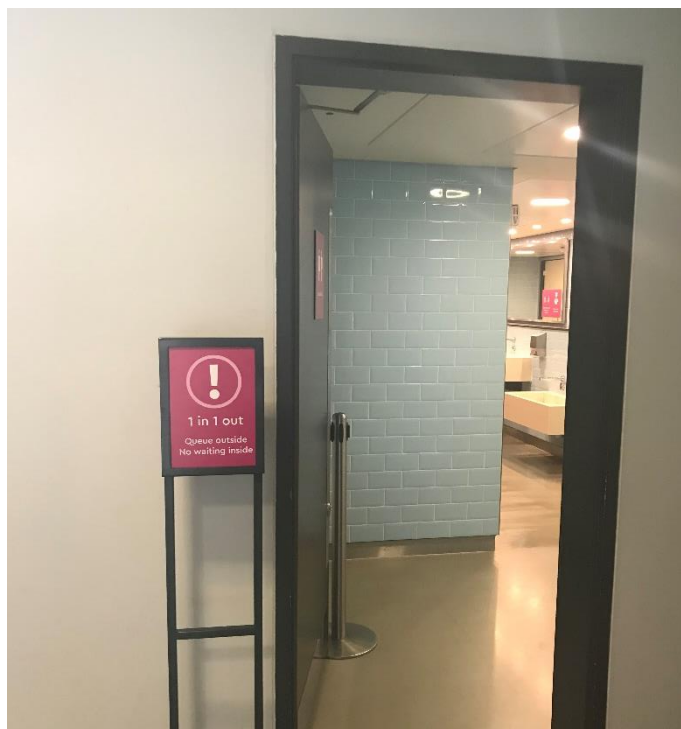


There is also a lift that can take you all the way back down to the ground floor



There are also stairs – 61!

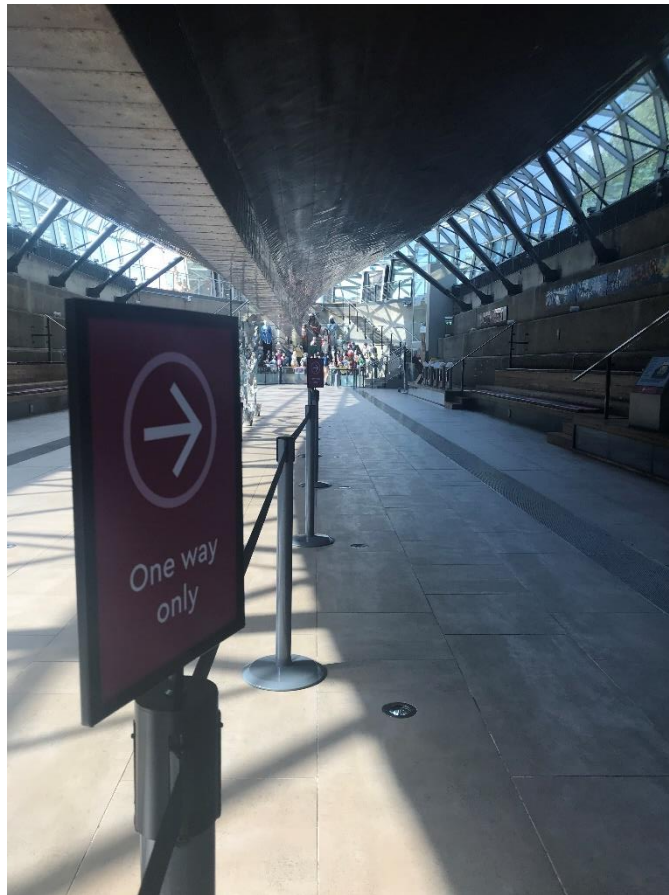
Once you get downstairs there are some more toilets:



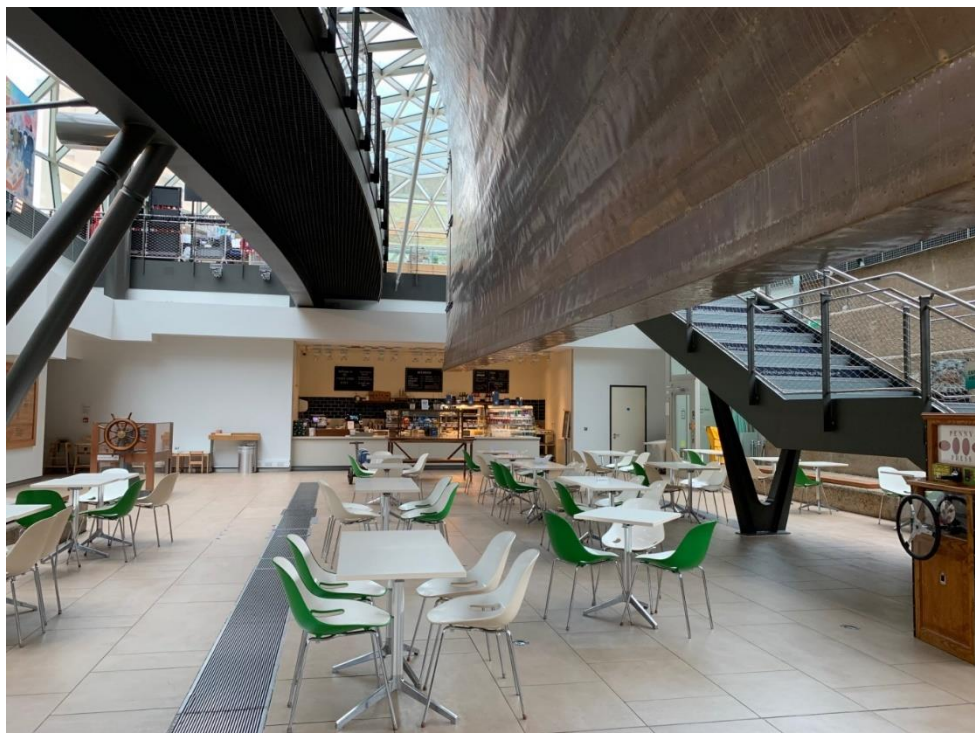


Dry Dock

This space can be loud. There are some bright screens and sound effects.



The café is here



If you need help you can look for:



Someone wearing a black uniform



Someone wearing a badge

**Everyone who works at the museum wears a
Badge around their neck**

If you have any questions then you can speak to a member of staff.

The Ticket Bookings office is open 9am-4pm,

Monday-Friday: Tel: +44 (0)20 8312 6608 |

Email: bookings@rmg.co.uk