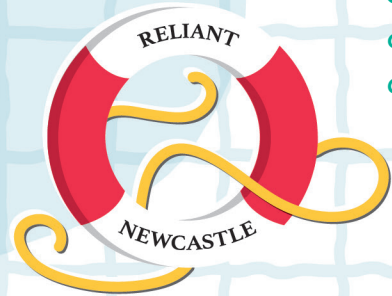


Find

## Sea Things

on Level 1

*Sea Things shows a huge range of objects linked to the sea including a whale's tooth, a Roman anchor and an ancient Egyptian model boat.*



Look at objects in this gallery.

**Can you find an object that you really like?**

What do you think your chosen object is and how might it have been used?

My object is .....

**Why do you like it? What material and colour is it?**

Talk together about what you think your chosen object is and how it might have been used.



**Pick an object and talk about what it looks like together.**

**Now try and find another object that is similar to it in some way.**

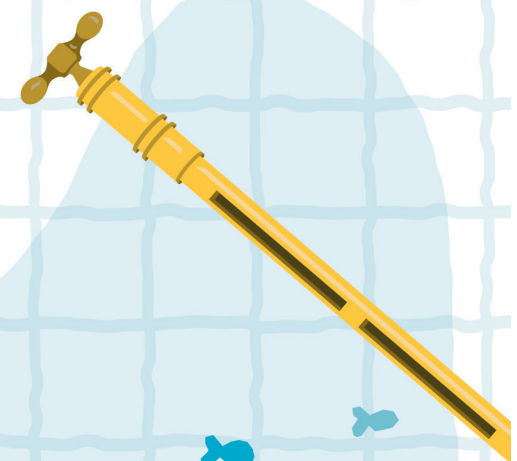
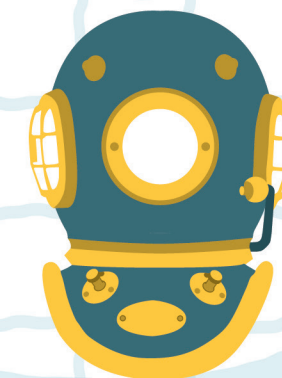
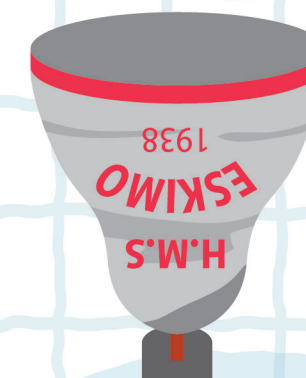
For example, if your first object is red and square try and find something else that is red or square.

**Make a drawing of your two objects on an adventure at sea.**



Choose one of these objects to look at closely.

**How do you think it might feel if you touched it?**



Go ahead and feel it, run your fingers over all the surfaces.

**Can you describe to someone how it feels in three words?**

**Does it feel how you expected?**



Find a spot on the Great Map to begin your journey.

What might you see on a journey across an ocean?

Who might you meet on your journey?

Have you ever seen the sea? What might you see at the seaside? Today you will discover stories about the sea in the Museum. Use this trail to record what you find. You will meet sea travellers and explorers who sailed across the oceans.

What would you call a ship that helps you discover stories about the sea?

Where would your ship take you?

Look up high to spot the back of the ship *H.M.S. Implacable*. It has this name to show sailors that it couldn't be stopped.

When you are in the galleries feel free to find a comfortable spot to sit, either on a bench or on the floor to draw or write on your trail. If you need any help during your visit speak to our friendly staff. There are toilets with baby changing facilities and places to eat and rest throughout the Museum. For more details please see the Museum map.

Use this trail to discover amazing objects and record your journey.

In the Museum you will find hundreds of incredible objects which tell the stories of people and their connections to the sea.

## Discover

NATIONAL  
MARITIME MUSEUM  
GREENWICH

Now our adventure in the Museum is coming to an end, look back at your trail...

What did you see?  
What was the best bit of your journey?

Is there anything else you would like to remember?  
Add a drawing or make a note on your trail.

What will your next adventure be?