

Find Tudor & Stuart Seafarers on Level 2



Here you can meet some of the famous and infamous sea travellers of the 1500-1600s who sailed the oceans in search of new encounters, knowledge, wealth and power.



Have a look at the model of the Stuart Royal Dockyard.

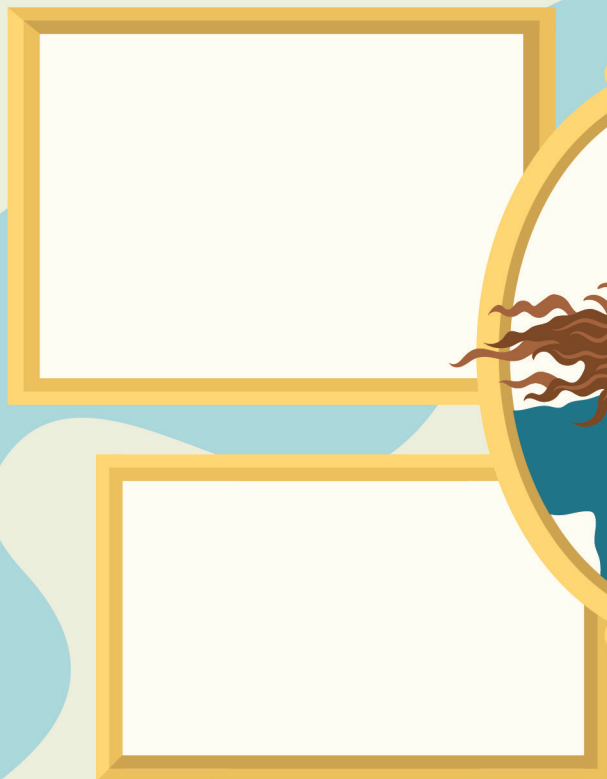
Act out one of the tasks that a dock worker is doing and ask someone else to guess what it is.



Some of the explorers in this gallery made maps of what they found on their voyages highlighting things that might be useful or dangerous to future travellers and traders, including mythical sea creatures.



Look at the different portraits in the gallery. Sketch the ones you find interesting. Who were they? Where did they travel to?



Do you know anyone today who has been on a journey?

Create a portrait of them alongside these historic travellers.

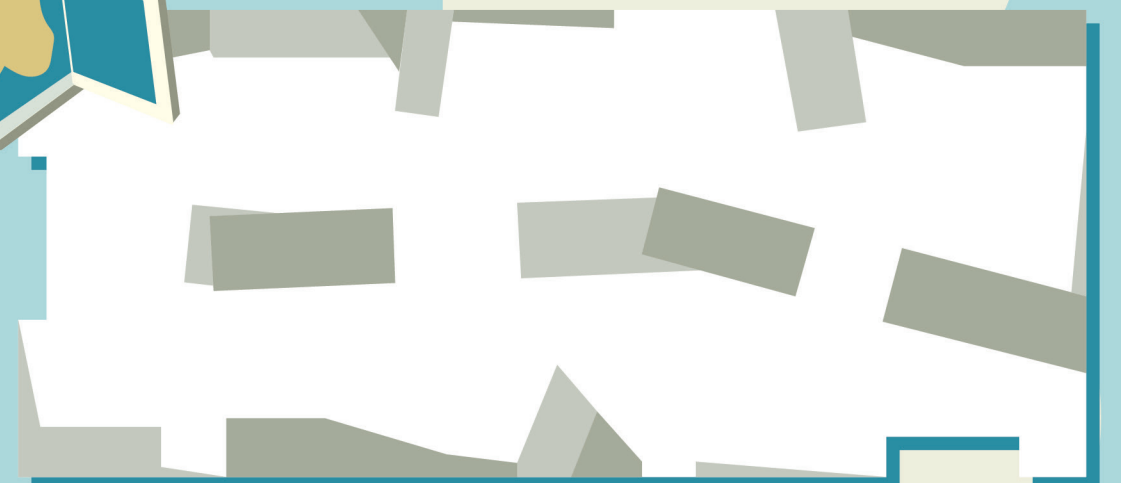


Look at the maps on display.

How do the maps look different to the maps we see today?

Make a map of the room on the plan below.

Include the objects and features you feel are most important for other people to know about.



Find a spot on the Great Map to begin your journey.

Today you will discover stories about the sea in the Museum. Use this trail to record what you find. You will meet sea travellers and explorers who sailed across the oceans.

How could you prepare for a journey across the ocean?

Who do you know who has been on a journey across an ocean?

Can you imagine spending years on a ship without knowing where you are going or what you might find?

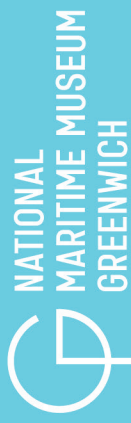
How might you feel? Who would you miss?

When you are in the galleries feel free to find a comfortable spot to sit, either on a bench or on the floor to draw or write on your trail. If you need any help during your visit speak to our friendly staff. There are toilets with baby changing facilities and places to eat and rest throughout the Museum. For more details please see the Museum map.



Encounter

In the Museum you will find hundreds of incredible objects which tell the stories of people and their connections to the sea. Use this trail to discover amazing objects and record your journey.



Now our adventure in the Museum is coming to an end, look back at your trail...

What did you see?
What was the best bit of your journey?

Is there anything else you would like to remember?
Add a drawing or make a note on your trails.

What will your next adventure be?

