

# Find Traders on Level 1



*Traders looks at the East India Company, which shaped Britain's trade, relationships and conflicts with Asia for over 250 years.*



Look around the gallery and choose an object that you would take with you on a trading journey.

**Why do you think it would be useful to trade?**

**Talk to someone else and try to persuade them to buy it from you or trade it for another object in the gallery.**



Choose any direction to go in.  
Pick an object but keep it secret.

**Now describe your object to someone else.  
Can they find your object?**



Find some of the goods that the East India Company bought and sold. Make a note of what you find.

**Have you found anything that is still used today?  
Do you use it yourself? Who else might use it?**



**Can you find materials the East India Company traded?**

Think about the clothes you are wearing today.

**What materials are they made from?**

Talk together about where the materials have come from and how far your clothes may have travelled.





Find a spot on the Great Map to begin your journey.

Imagine that you are investigating stories about people and the sea in the Museum and use this trail to record what you discover. You will meet sea travellers and explorers who sailed across the oceans.

What do you already know about trade?

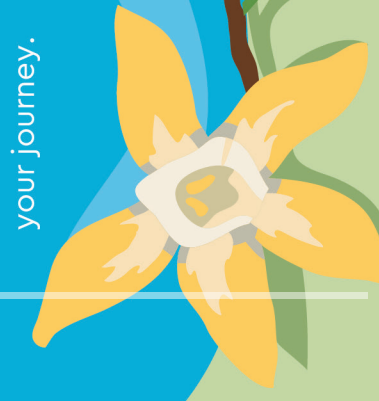
What kind of items might have been traded across the oceans?

How would you feel going on a long journey by sea from Britain to India to trade your wares?

Walk a route across the oceans that a ship might take on its trading journey.

Stand on the Great Map.

## Exchange



your journey.

In the Museum you will find hundreds of incredible objects which tell the stories of people and their connections to the sea. Use this trail to discover amazing objects and record

NATIONAL  
MARITIME MUSEUM  
GREENWICH



Now our adventure in the Museum is coming to an end, look back at your trail...

What did you see?  
What was the highlight of your journey?

Is there anything else you would like to remember?  
Add a drawing or make a note on your trail.

What will your next adventure be?

HERITAGE  
FUND

When you are in the galleries feel free to find a comfortable spot to sit either on a bench or on the floor to draw or write on your trail. If you need any help during your visit speak to our friendly staff. There are toilets with baby changing facilities and places to eat and rest throughout the Museum. For more details please see the Museum map.