

'Pacific Worlds' gallery challenge

Adi Yeta (Canoe)

Say the Fijian greeting of Adi Yeta and find out why this is important.

Look at the paintings, there are lots in the Exploration section.
Which painting would you like to step into and why?

Up to 3 points.

Quick-fire 1-point questions

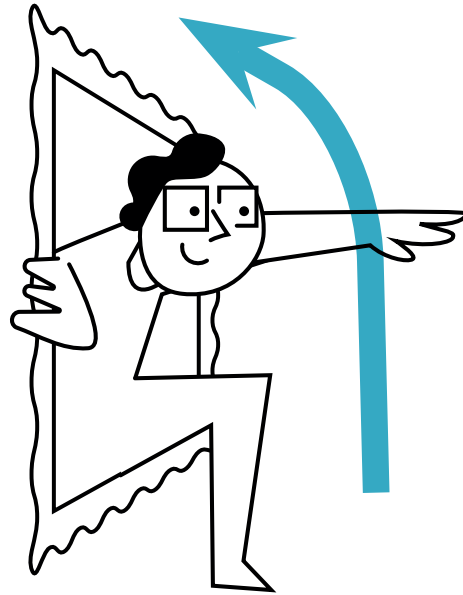
Identify one material which holds together Adi Yeta.

Can you find an artwork that includes evidence of exploitation?

Do you think we can call Captain James Cook a hero?
Up to 3 extra points for explaining why or why not.

What or who was Trim?

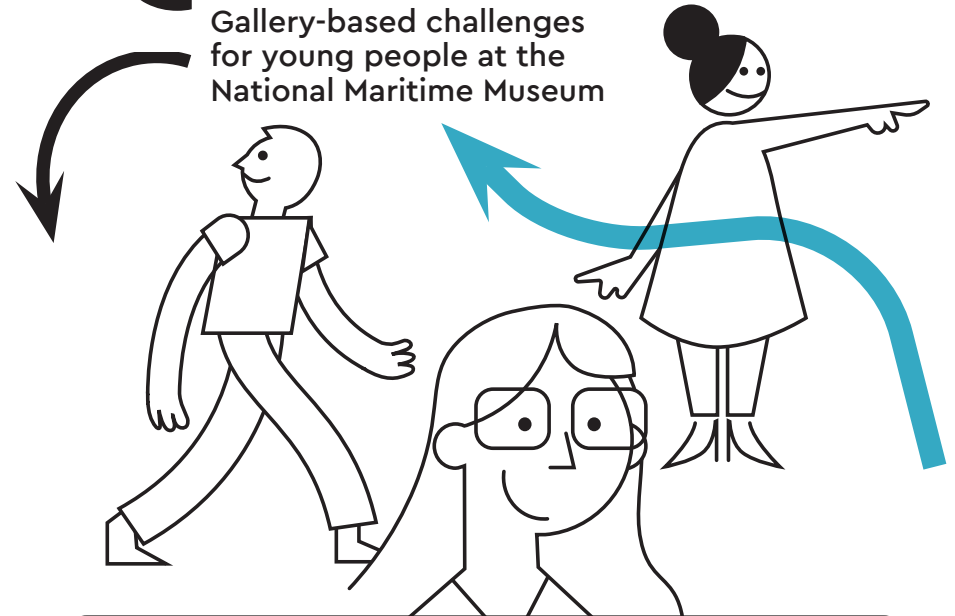
Find three different tattoos.



ROYAL
MUSEUMS
GREENWICH

Museum Quest

Gallery-based challenges
for young people at the
National Maritime Museum



- The aim of the quest is to complete as many tasks and win as many points as possible
- Before you start, decide who can give out points. Is it supervising adults only or can students take it in turns to award points?
- You may ask for help from your supervising adults or the Museum team in the galleries to complete some of the challenges.
- You can tally your points with a pencil or keep score in your head.

The 'Tudor and Stuart Seafarers' gallery challenge

Have a look at all the people displayed in this gallery, choose one and strike a pose similar to theirs.

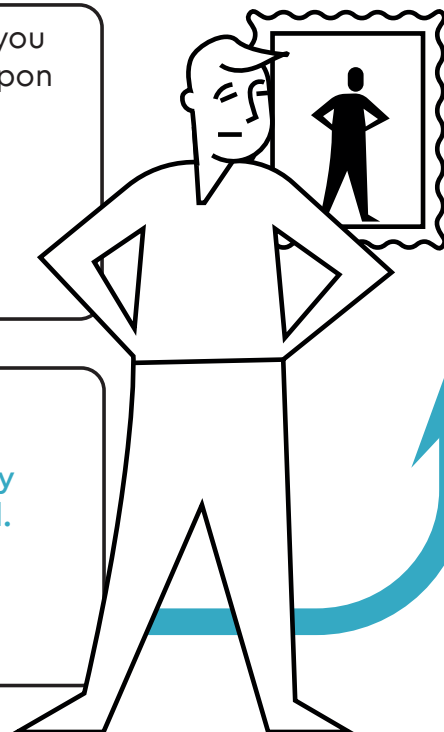
The best pose gets 3 points. Extra points for explaining who is represented and who is not.

Quick-fire 1-point questions

Which object is made from the first recorded coconut brought to the UK?

Find the weapons in the gallery. If you were going into battle, which weapon would you select and why?

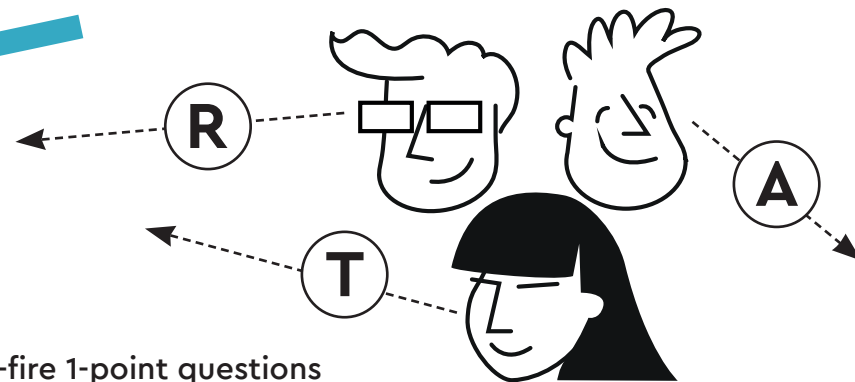
Can you find the story of a woman (who isn't a queen!)?
1 extra point for giving reasons why women's stories are harder to find.



'Forgotten Fighters' gallery challenge

Play I-spy in the gallery. One person chooses an object and tells the group the letter it begins with, the others guess which object it is.

2 points for getting the answer in under 3 guesses,
1 point for getting it in under 5 guesses.



Quick-fire 1-point questions

Can you see any objects that were damaged in the First World War?

Which ship looks most deadly?

How many mentions of women are there in this gallery?

Find a communication device.

'Traders' gallery challenge

In small groups, choose a painting or glass display case. One person must look at it for 30 seconds and then turn around so they cannot see it. The rest of the group should ask 5 questions about it.

1 point for each correct answer.

Quick-fire 1-point questions

How many different animals can you find?

Who do you think has the worst wig?

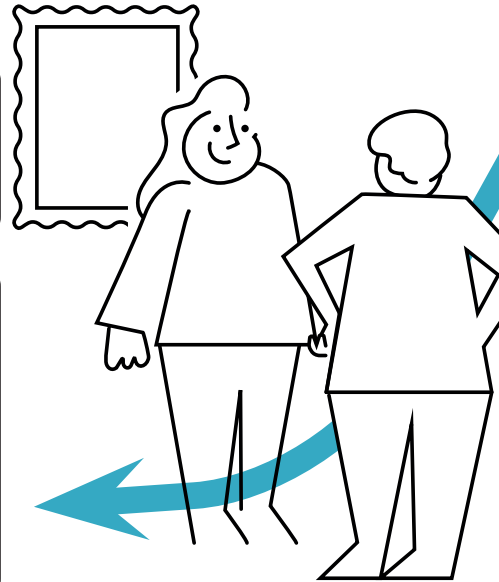
1 point awarded for a convincing answer.

Name one way artists make people look important.

Which teapot do you like the most?

1 point for a convincing answer.

Find one object that shows resistance from Chinese and/or Indian people to the British.



'Nelson, Navy, Nation' gallery challenge

Find something in the gallery that begins with the first letter of your first name. Can you find enough objects that you could spell out your whole name?

1 point for each letter of your name you find.

Quick-fire 1-point questions

What did Horatio Nelson use to eat with?

Find the cat o' nine tails. What was it used for?

Find the painting of Nelson and the bear. Why might this painting be propaganda?

What do you think is the most beautiful thing in the gallery?

1 extra point for giving a convincing reason.

Find the curtain tie celebrating Nelson. What odd object would you choose to celebrate your life?



'Polar Worlds' gallery challenge

Find the 'I feel most lost' section and write your thoughts on a card.
3 points.

Quick-fire 1-point questions

Who do you think has the best haircut in the gallery?

What is unusual about the sea spider?

How many animals are in this gallery in total?

You're hungry, can you find something you could eat in this gallery?

How long are polar bear claws?



'Sea Things' gallery challenge

Imagine you must give a talk on something in this room – what would you choose and why?
Up to 3 points.

Quick-fire 1-point questions

Which ship model do you think would be best for cargo?

What is the origin of the word 'posh'?

Find the oldest thing in the collection.

Which is your favourite patch box?

