

Royal Observatory Greenwich

WE ARE HERE TO HELP YOU

www.rmg.co.uk/plan-your-visit/schools/royal-observatory



Before your visit

- We have created **The Royal Observatory Secondary Schools Programme Guide** to help you plan your visit.
- You can book a preliminary visit to familiarise yourself with our site.
- We have risk assessment guideline that can help inform your full assessment.
- We also have a **Secondary School Site Map** to help you get around during your visit.

You can find these resources by visiting:

www.rmg.co.uk/plan-your-visit/schools/royal-observatory

Then select 'Visit guides & activities' under the 'Plan your visit' section.



During your visit

- We have created a **Secondary School Site Visit Guide** to introduce a self-guided element to your visit and to highlight the key parts of the Observatory to have a look at.

You can find these resources by visiting:

www.rmg.co.uk/plan-your-visit/schools/royal-observatory

Then select 'Visit guides & activities' under the 'Plan your visit' section.

- We run different types of days at the Royal Observatory (as outlined in the programme guide).

1. Discovery Day

Designed to be flexible visit days, you can choose from a planetarium show, a workshop, a gallery visit, use of a lunch room or all of these.

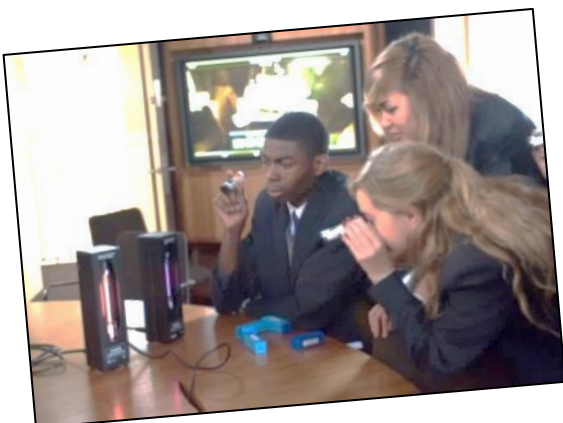


2. Study Day

Exclusively for secondary groups – the theme changes throughout the year but the structure is the same as a discovery day with the addition of an interactive, in-depth masterclass session.

3. Space Spectacular Week

They only run 3 times a year and a visit during one of these weeks include a planetarium show, demo-filled quiz workshop, astronomy gallery visits and a lunch room slot.



4. Aurora Days

These days are specially designed for SEN groups and run once a term. They are dedicated to just these groups so we have no other schools on site. Your visit would include a workshop and tailored planetarium show.

School visits to the Royal Observatory Greenwich.



After your visit

We also have **FREE classroom resources** for you to download once you're back in the classroom. These include experiments and worksheets for pupils at KS3, KS4 and Post-16.

Forces on a Space Probe Key Stage 4

Topics covered: weight, air resistance, force, velocity, acceleration, balanced and unbalanced forces

Watch the video "Newton's Laws of Motion", <https://vimeo.com/159043081>



After travelling 8 months through the Solar System to get to Mars, NASA's Curiosity rover experienced changing forces as it descended through the Martian atmosphere to land on the surface in August 2012.

Its descent consisted of a period of free fall followed by a parachuted descent and finally it used small thrusters to slow it down enough for it to land safely.

We have plenty of **FREE** resources for teachers and pupils linked to astronomy, science and maths.

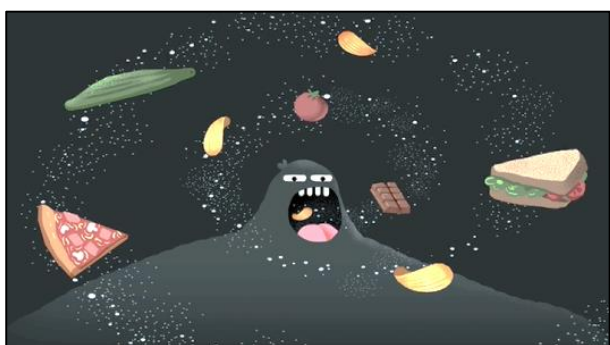
For more information, search for 'Royal Observatory school visits' and follow the links on the page.



There are also **podcasts** and our **space blogs** to keep you up to date with the latest scientific news and astronomical events.

We have **award-winning videos** that answer those big astronomy questions like 'Are there aliens?' and 'What's inside a black hole?' You can find these at:




vimeo.com/royalobservatory




Our **Think Space Lectures** provide a rare opportunity to hear astrophysicists talk about the latest research in the fields of astronomy, physics, planetary geology and space exploration along with a chance preview a short planetarium show after. **FREE** admission for school groups!

Perhaps you'd like for an ROG Astronomer to come to your school and deliver our **Outreach session** – A Question of Space. It's filled with interactive demos and a quiz that will get all of your students involved.





Visit our website - rog.co.uk Like us on Facebook Follow us @ROGAstronomers



NEW Outreach Offer
We'll be bringing bits of our interactive astronomy sessions to secondary schools in the new academic year - we can visit your school on Thursdays in September and December 2016. If you are interested in finding out more drop Liz (our education manager) an email: esavery@rog.co.uk

Contact Now



Videos and Activities
We answer all the big questions about space and physics in our animated videos. They're great to use during the plenary of a lesson and we have many more videos uploaded on [Yimeo](https://www.youtube.com). You can find free activities and worksheets linked to the videos on [TES](https://www.tes.com).

Download Resources

If you'd like to keep up to date with our offers and events for schools then sign up to our **monthly e-newsletter**.

We even have a **Teachers Forum** where we invite teachers to provide ideas and feedback on our schools programme and digital resources. We run **FREE** planetarium shows and 'Meet the Astronomer' events for pupils of our forum members.



Delivered by our Royal Observatory astronomers, we hold **ITT and CPD sessions** each tailored to develop your skills and provide you with great ideas to teach astronomy confidently. Our on-site visits include a visit to our planetarium and a look around our historic site.

