


ACTIVITY THE GREENWICH TIME BALL

LOCATION FLAMSTEED HOUSE

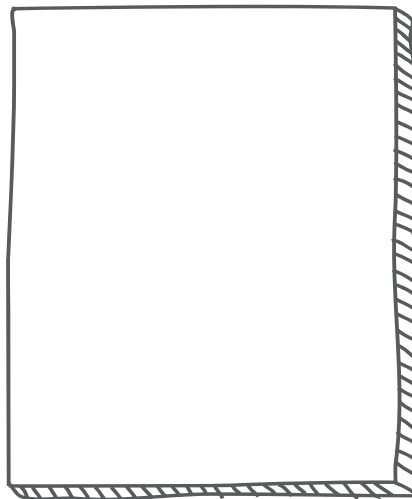


GALLERY OUTSIDE & TIME & GREENWICH




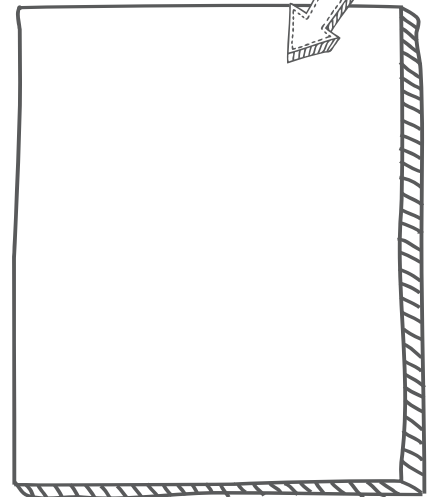
Stand in the courtyard facing Flamsteed House and look up! Draw what you see on top /// 

Every day the astronomers assistants at the Observatory would raise the time ball up and let it drop at exactly 1pm Greenwich Mean Time. It still does this every day (since 1833).

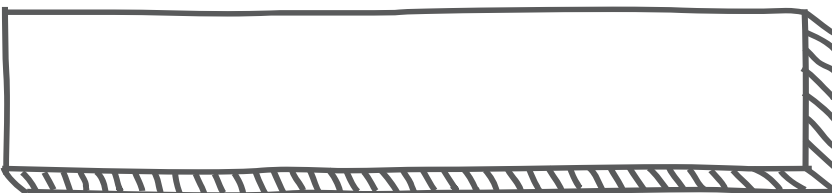


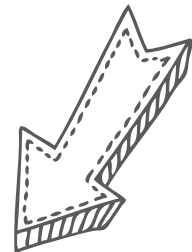
Lots of ships used the Thames for transport long ago.

Why do you think the time ball was useful for the sailors with clocks on these ships? /// 



Why do you think the time ball is bright and red? ///





Go to the Time & Greenwich gallery at the bottom of Flamsteed House. To get there you need to pass through the Astronomers Apartments, up into the stunning Octagon Room, down to Harrison's Clocks and then down again.

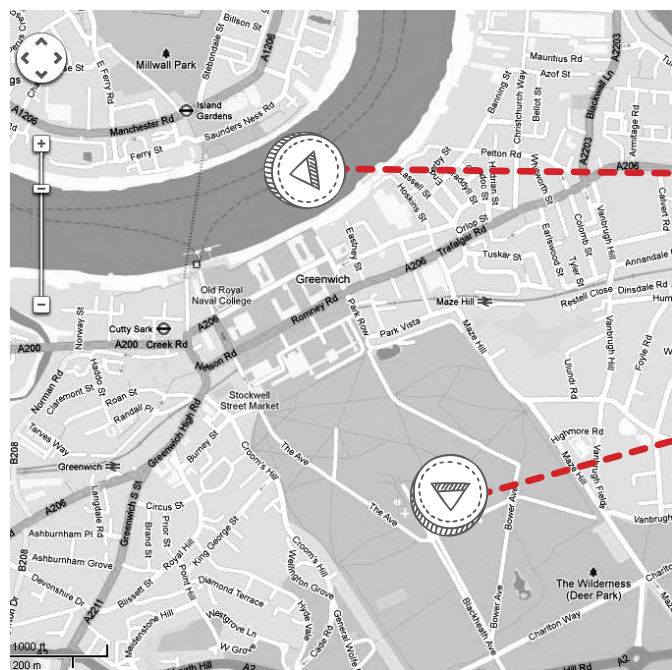
In the very bottom gallery here find the small grey telescope – the only one in the room.

Can you use it to see the time ball drop? ///

(adult help may be needed)



Put an X on the map below where you think you would really need to stand to see the time ball like you can through this telescope. ///



RIVER THAMES ///

ROYAL OBSERVATORY ///

