

ACTIVITY HERSCHEL FAMILY TREASURE HUNT

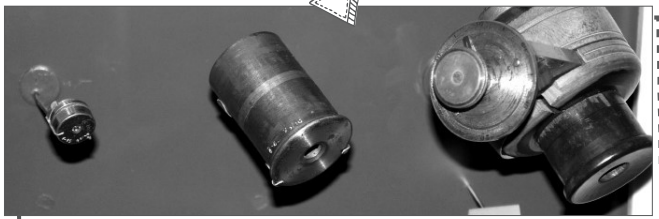
LOCATION ASTRONOMY CENTRE & OUTSIDE

GALLERY MULTIPLE



William Herschel, his sister Caroline and his son John were all astronomers. The Observatory has a number of amazing objects related to the family. Find the object using the picture, read a fact about it and answer the question. Good luck!

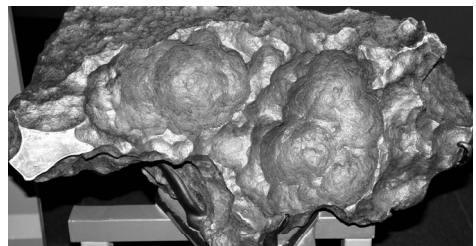
FIND William Herschel's little eyepieces for his telescope



FACT They were used to find the seventh planet in the Solar System.

Which planet did he discover? ///

FIND Meteorite – a rock that has fallen from space. Good luck!



FACT William's son John classified this object as extraterrestrial: from outer space and not from the Earth.

What two types of metal is this meteorite made up of? ///

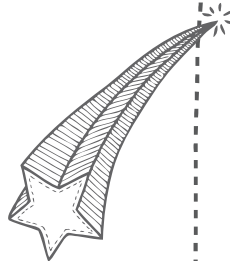


FIND Portable clock belonging to John. HINT: Go North from the South Building and go into "Time for the Navy"



FACT It was used to help John map the night sky from below the equator.

Which half of the world did he map the night sky from – Northern or Southern hemisphere? ///



FIND Herschel's 40 foot Telescope (a part of it)



FACT Caroline and William would work together to gather information about the night sky. William would look through the telescope and shout down to Caroline who would write his observations from a small hut.

This telescope was used in Slough in the countryside. Why would it be better to use it there rather than here in South East London? ///