

**ESOL Resources
National Maritime Museum**

The National Maritime Museum tells stories of global exploration and exchange through connections to the sea. The museum cares for a very large collection of objects and records which belong to everyone in the UK. Use these resources to find out about some of the stories in your collection and practice using English.



Tea Drinking



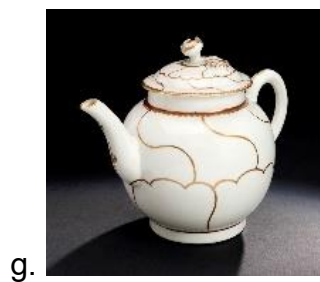
Tea is drunk all over world and by the 19th century was the most popular drink in Britain. The tea plant was originally grown in China and then later in India. The British trade in tea has a very dark history and contributed to wars in China and the Trans-Atlantic slave trade.

Task 1

To prepare a cup of tea you need some ingredients and kitchen appliances.

Match the words below to the pictures.

- | | | | | |
|------------|-------------------|---------------|------------|---------|
| 1. honey | 2. kettle | 3. lemon | 4. tea bag | 5. milk |
| 6. tea pot | 7. cup and saucer | 8. sugar bowl | 9. spoon | |



Task 2 - Instructions for making a cup of tea

Complete the sentences with the verbs below.

boil brew fill add pour put

1. the kettle with fresh water.
2. one tea bag for each person into the teapot.
3. the water.
4. the boiling water into the teapot.
5. the tea for 5 minutes.
6. some milk, lemon, honey or sugar if you want.

Task 3

Read the below facts about tea and then answer the questions below.

1. An average of three billion cups of tea are consumed daily worldwide.
2. There are four main types of tea: white, green, oolong and black.
3. 98% of people take their tea with milk, but only 30% take sugar in tea.
4. The Irish drink more tea per head than any other nation in the world.
5. The tea bag was invented in the 20th century by a tea merchant named Thomas Sullivan.
6. Iced tea was invented in America.
7. 96% of all cups of tea made daily in the UK are brewed from tea bags.

Now, answer these questions on Tea-drinking facts and history.

- a) What century was the tea bag invented?
- b) Name the four main types of tea?
- c) Who are the biggest tea-drinkers per head?
- d) Which country invented iced tea?
- e) Most people take what in their tea?



Task 4 – Facts about the history of tea

Read the below facts about the history of tea and then start the online Kahoot! Quiz.

1. China was the first country to grow tea, more than 5,000 year ago.
2. Tea plants were brought from China to India by Robert Fortune in the 1840s and 1850s.
3. Tea-drinking in England was started in the court of King Charles II by his Portuguese wife, Catherine of Braganza. The Portuguese had been trading with China for over 100 years by this time.
4. At first only small amounts of tea were imported to England, and for some years it was a special and expensive item.
5. Tea became popular in England in about the 1720s, when it was sweetened with sugar.
6. The English word 'tea' is thought to be from the Indian word for tea 'char' which sounds like the Chinese word for tea, *tcha*.
7. The Cutty Sark, a ship, made eight trips to China to bring back tea to England.

If you would like to read more about the history of tea you can visit this webpage:
<https://www.rmg.co.uk/discover/explore/interesting-facts-about-tea>

Now you're ready to begin the quiz! Read the instructions below:

1. Using your phone, tablet or computer type into the search engine: kahoot.it
2. Click on Play Kahoot! - Enter game PIN here
3. Type in this pin number: 07066790, click Enter
4. Enter your name
5. Start the game
6. Good Luck! Results will tell you how well you've done.

Answer key

Task 1: 1-h 2-i 3-b 4-f 5-e 6-g 7-a 8-j 9-c

Task 2: 1.fill 2.put 3.boil 4.pour 5.brew 6.add

Task 3 : a.20th century b.white, green, oolong and black c.The Irish d.America
e.milk