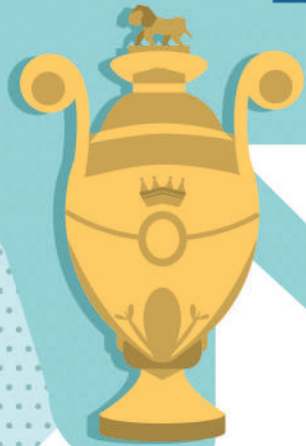


Find **Maritime London** on the Ground Floor



Maritime London looks at the River Thames which has been used for travel and transport throughout history.



Find a picture with people in it.

What can you see? Where are they?

Who are they? Imagine you are there with them, what sounds or smells might you notice?

Together, tell a story about what is happening in the picture. Record your story here or make a video with a phone.



Look in your pockets or bags for an object.

Why do you have it with you?

Choose a person in a picture in the gallery.

What might they have with them for their journeys?



What does this shape make you think of? This drawing shows part of someone in the gallery, can you find who?

Use your imagination and your pencil to turn it into something else.



Find a spot on the Great Map to begin your journey.

Have you ever seen the sea? Can you imagine what the sea smells like?

Today you will discover stories about the sea in the Museum. Use this trail to record what you find. You will meet sea travellers and explorers who sailed across the oceans.

Everyone can be an explorer, what do you think makes a good explorer?

What characters and animals can you see?

What character or animal would you put on the front of your ship.

Look high and low to spot a collection of large, brightly painted figures fixed to the wall. Each of these figureheads were fixed to the front of a ship. Their design was usually related to the name or purpose of the ship.

When you are in the galleries feel free to find a comfortable spot to sit, either on a bench or on the floor to draw or write on your trail. If you need any help during your visit speak to our friendly staff. There are toilets with baby changing facilities and places to eat and rest throughout the Museum. For more details please see the Museum map.

Explore

In the Museum you will find hundreds of incredible objects which tell the stories of people and their connections to the sea. Use this trail to discover amazing objects and record your journey.

NATIONAL MARITIME MUSEUM GREENWICH

Now our adventure in the Museum is coming to an end, look back at your trail...

What did you see?
What was the best bit of your journey?

Is there anything else you would like to remember?
Add a drawing or make a note on your trail.

What will your next adventure be?